

TECPOS[®]

Technology power system



CYLINDERS



PUMPS



TOOLS



PUNCH

C · O · N · T · E · N · T · S

SINGLE-ACTING CYLINDERS / 4



DOUBLE - ACTING CYLINDERS / 6



SHORTY CYLINDERS / 8



LOW PROFILE CYLINDERS / 9



SINGLE-ACTING CENTER HOLE CYLINDERS / 10



DOUBLE-ACTING CENTER HOLE CYLINDERS / 12



ALUMINUM CYLINDERS / 13



LOCK NUT CYLINDERS / 14



PROPELLER FITTING JACKS / 15



BOLT TENSIONERS / 16



NUT SPLITTERS / 17



HYDRAULIC FLANGE SPREADER / 18



HYDRAULIC PULLERS / 19



Oil - L - JACKS / 20



WELDING JACK PUMP / 22



ALUMINUM PULLING JACKS / 23



HYDRAULIC PUNCH / 24



ANGLE CUTTERS / 26



NOTCHING MACHINE / 27



ROD CUTTER / 27



HAND PUMPS / 28



FOOT PUMP / 30



FOOT PUMP / 30



AC PUMP / 31



TECPOS

DC PUMP (Battery operated)
(700kg/cm²) / 31



ELECTRIC HYDRAULIC PUMPS
(700kg/cm²) / 32



CABLE CUTTER / 35



WIRE CUTTER / 35



HYDRAULIC KNOCKOUT
PUNCH / 36



HOSE CRIMPING PRESS / 37



TERMINAL CRIMPING PRESS / 38



TERMINAL CRIMPING
PRESS / 39



PORTABLE BATTERY
OPERATED TOOLS / 40



PORTABLE BATTERY
OPERATED TOOLS / 40



PORTABLE BATTERY
OPERATED TOOLS / 41



PORTABLE BATTERY
OPERATED TOOLS / 41



PORTABLE BATTERY
OPERATED TOOLS / 41



STAINLESS PIPE JOINTER / 42



HYDRAULIC PIPE
BENDERS / 46



RATCHET HAND
BENDER / 47



WIRE ROPE
SWAGE PRESS
/ 48



SHOP PRESS / 49



HYDRAULIC ROCK SPLITTER CYLINDER / 50



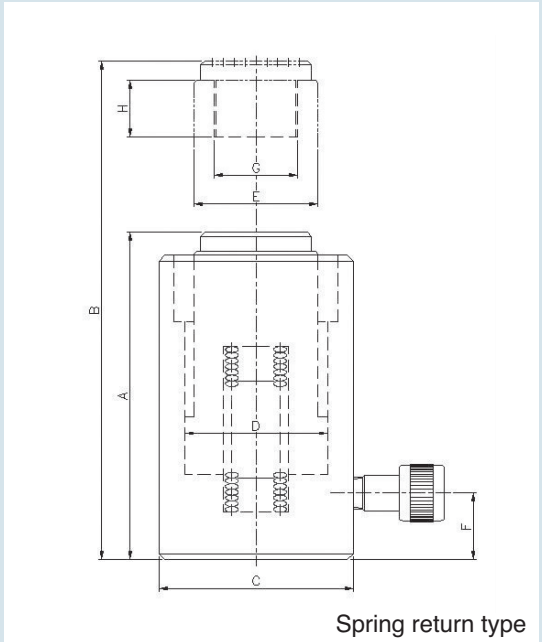
HYDRAULIC ACCESSORIES / 54



HYDRAULIC ACCESSORIES / 55

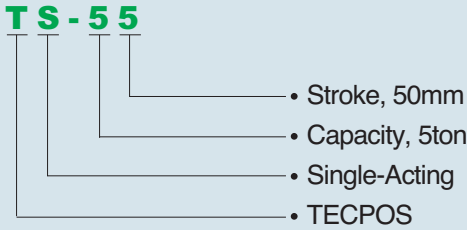


SINGLE - ACTING CYLINDERS



- Capacity : 5 ~ 100 tons
- Stroke : 50 ~ 200mm
- Maximum Pressure : 700 Bar
- Hydraulic Coupler : TBC 381F(PT3/8)
- Pump : To use 30% more than oil capacity of Cylinder

■ How to understand Model No.



T E C P O S

■ Specifications

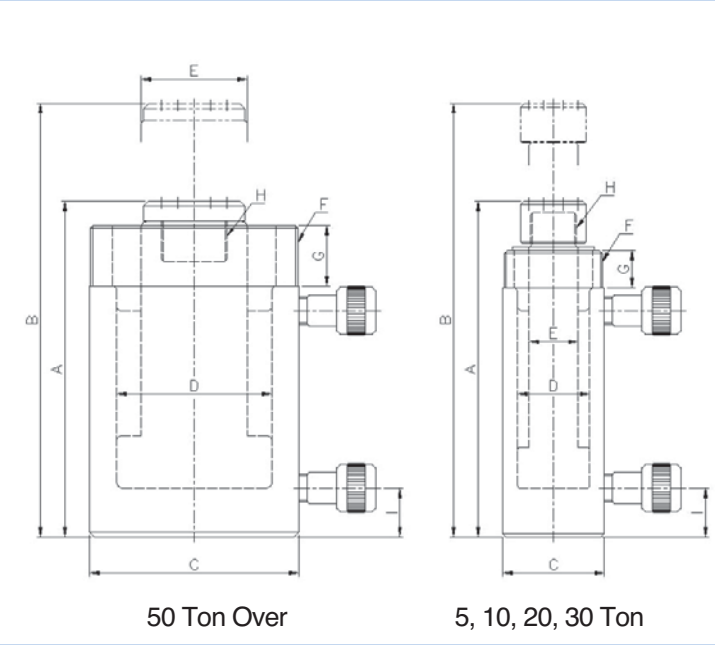
Model	Cylinder Capacity (tons)	Stroke (mm)	Cylinder Effective Area (cm ²)	Oil Capacity (cc)	Retracted Height	Extended Height	Cylinder Out Dia.	Cylinder Bore Dia.	Piston Rod Dia.	Base to Inlet port	Piston rod Internal Thread	Piston rod Thread Length	Weight (kgs)	Pump
					A	B								
TS-55	5	50	6.38	35	134	184	38	28,5	25	25	3/4-16	16	1.1	1B
TS-510		100		70	184	284							1.4	
TS-515		150		106	234	384							1.8	
TS-520		200		140	284	484							2.2	
TS-105	10	50	15.2	76	133	183	58	44	38	20	1-8	19	2.1	
TS-1010		100		152	183	283							3.4	
TS-1015		150		228	233	383							4.8	
TS-1020		200		304	283	483							5.6	
TS-205	20	50	33.18	166	165	215	88	65	57	35	M38×2.0	26	7	
TS-2010		100		332	215	315							8.8	
TS-2015		150		498	265	415							11	
TS-2020		200		664	315	515							12.7	
TS-305	30	50	44.18	220	172	222	102	75	65	35	M44×2.0	30	9.8	
TS-3010		100		440	222	322							12.5	
TS-3015		150		660	272	422							16	
TS-3020		200		880	322	522							17.5	
TS-505	50	50	70.88	355	173	223	127	95	85	35	-	-	15.8	
TS-5010		100		710	223	323							20	
TS-5015		150		1070	273	423							23.5	
TS-5020		200		1425	323	523							27.7	
TS-10010	100	100	132.7	1330	226	326	165	130	110	40	-	-	34	
TS-10015		150		1991	286	436							44.5	

※ The above options are subject to change without prior notice

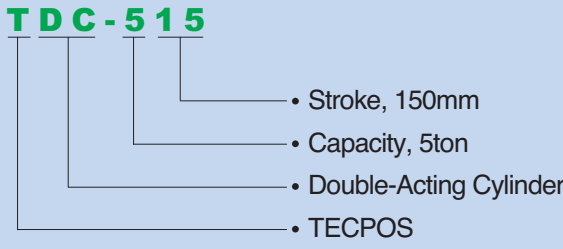
DOUBLE - ACTING CYLINDERS



- Capacity : 5 ~ 1000 tons
- Stroke : 150 ~ 300mm
- Maximum Pressure : 700 Bar
- Hydraulic Coupler : TBC 381F(PT3/8)
- Faster Retraction under hydraulic power
- Removable plunger caps



■ How to understand Model No. 5, 10, 20, 30



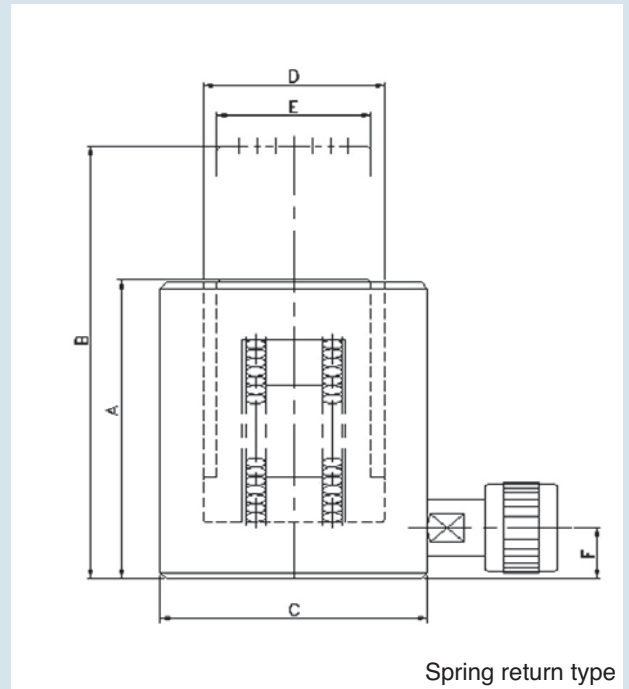
T E C P O S

■ Specifications

Model	Cylinder Capacity (tons)	Stroke (mm)	Cylinder Effective Area (cm ²)	Oil Capacity (cc)	Retracted Height	Extended Height	Cylinder Out Dia.	Cylinder Bore Dia.	Piston Rod Dia.	Coller Thread	Coller Thread Length	Piston Thread	Base to Inlet port	Weight (kgs)	Pump	
					A	B	C	D	E	F	G	H	I			
TDC-515	5	150	9.6	144	285	435	45	35	25	M45×P1,5	25	M20×P1,5	25	3.3	1B-Double	
TDC-530		300		288	433	733							30			4.8
TDC-1015	10	150	15	228	314	464	62	44	30	M60×P2,0	30	M28×P2	30	4.5		
TDC-1030		300		456	464	764							9			
TDC-2015	20	150	33.2	497.7	363	513	88	65	45	M85×P2,5	50	M40×P2	36	13.5		
TDC-2030		300		995.4	513	813							20	1C Double		
TDC-3015	30	150	44.2	662.6	398	548	105	75	55	M100×P2,5	55	M50×P2	40	24		
TDC-3030		300		1325.2	548	848							33			
TDC-5015	50	150	70.8	1063	343	493	128	95	65	M127×P2,5	45	M40×P2	45	30		3A-Double
TDC-5030		300		2126	493	793							50			
TDC-10015	100	150	132.7	1990	352	502	178	130	100	M175×P3	50	M65×P3	45	64		
TDC-10030		300		3980	502	802							83			
TDC-15015	150	150	213.8	3207	381	531	218	165	120	M215×P3,5	55	M70×P4	50	95		
TDC-15030		300		6414	531	831							127			
TDC-20015	200	150	283.5	4253	400	550	248	190	135	M245×P4	60	M80×P4	55	129	3B-Double	
TDC-20030		300		8506	550	850							169			
TDC-30015	300	150	433.7	6506	433	583	315	235	170	M315×P4	70	M80×P4	55	230		
TDC-30030		300		13012	583	883							298			
TDC-50015	500	150	706.8	10603	475	625	405	300	215	—	—	M90×P4	75	490	3HP-Double	
TDC-50030		300		21206	625	925							590			
TDC-80015	800	150	1164.2	17462	550	700	525	385	—	—	—	—	100	782	5HP-Double	
TDC-80030		300		34924	700	1000							989			
TDC-100015	1000	150	1452.2	21783	610	760	585	430	—	—	—	—	—	1216	5HP-Double	
TDC-100030		300		43566	760	1060							1533			

※ The above options are subject to change without prior notice

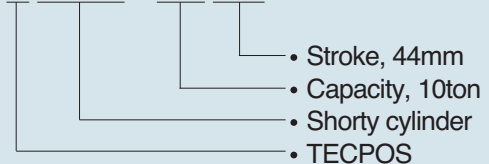
SHORTY CYLINDERS



- Capacity : 10 ~ 200 tons
- Stroke : 44 ~ 50mm
- Maximum Pressure : 700 Bar
- Hydraulic Coupler : TBC 381F(PT3/8)
- Compact, flat design for use where other cylinders will not fit.

■ How to understand Model No.

TSSC-1044

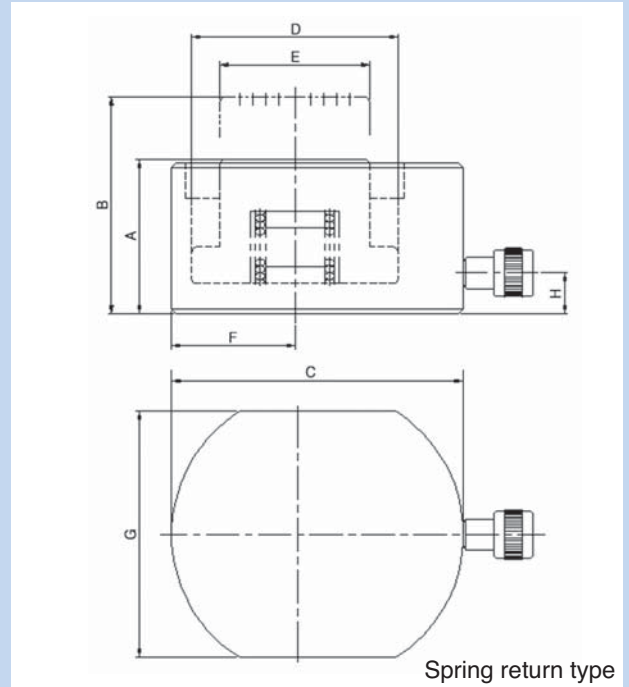


■ Specifications

Model	Cylinder Capacity (tons)	Stroke (mm)	Cylinder Effective Area (cm ²)	Oil Capacity (cc)	Retracted Height	Extended Height	Cylinder Out Dia.	Cylinder Bore Dia.	Piston Rod Dia	Base to Inlet port	Weight (kgs)	Pump
					A	B	C	D	E	F		
TSSC-1044	10	44	15.2	66	99	143	68	44	38	17	2.6	1B
TSSC-2044	20	44	28.3	124	99	143	88	60	51	17	4.3	
TSSC-3044	30	44	44.2	194	99	143	105	75	64	17	6.2	
TSSC-5050	50	50	63.6	318	109	159	125	90	75	19	10.2	
TSSC-10050	100	50	132.7	663	139	189	165	130	100	27	21	1C
TSSC-15050	150	50	201	1005	170	220	208	160	135	33	41.1	
TSSC-20050	200	50	283.5	1417	180	230	245	190	170	38	60.3	

※ The above options are subject to change without prior notice

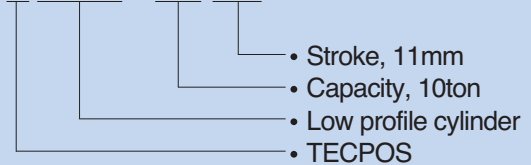
LOW PROFILE CYLINDERS



- Capacity : 5 ~ 150tons
- Stroke : 6 ~ 16mm
- Maximum Pressure : 700 Bar
- Hydraulic Coupler : TBC 381F(PT3/8)
- TECPOS low profile cylinders are designed for use where there is a minimum of clearance for insertion of cylinders
- From 10 to 150 tons capacity single-acting spring Return

■ How to understand Model No.

TSLC-1011



■ Specifications

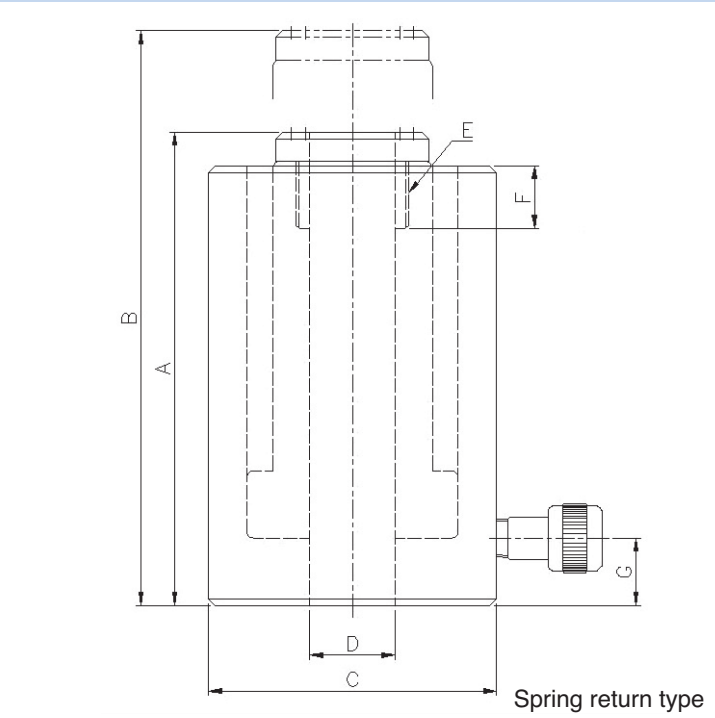
Model	Cylinder Capacity (tons)	Stroke (mm)	Cylinder Effective Area (cm ²)	Oil Capacity (cc)	Retracted Height	Extended Height	Cylinder Out Dia.	Cylinder Bore Dia.	Piston Rod Dia	Plunger to Base	Cylinder Dimension	Base to Inlet port	Weight (kgs)	Pump
					A	B	C	D	E	F	G	H		
TSLC-56	5	6	6.16	3.7	40	46	60	28	25	22	42	21	0.8	1B
TSLC-1011	10	11	15.2	16	45	56	85	44	38	29	56	21	1.5	
TSLC-2011	20	11	28.3	31	52	63	102	60	54	42	76	21	2.7	
TSLC-3013	30	13	41.85	53	59	72	115	73	64	48	95	21	4.2	1C
TSLC-5016	50	16	60.8	99	67	83	139	88	75	58	114	21	6.9	
TSLC-7516	75	16	103.87	164	79	95	165	115	85	70	140	21	11	
TSLC-10016	100	16	126.7	203	86	102	180	127	95	78	152	25	14.7	
TSLC-15016	150	16	201	317	100	116	215	160	115	97	190	24	25	

※ The above options are subject to change without prior notice

SINGLE-ACTING CENTER HOLE CYLINDERS



- Capacity : 10 ~ 100 tons
- Stroke : 41 ~ 75mm
- Maximum Pressure : 700 Bar
- Hydraulic Coupler : TBC 381F(PT3/8)
- Designed for use with screws, rods, cables and Pullers



■ How to understand Model No.

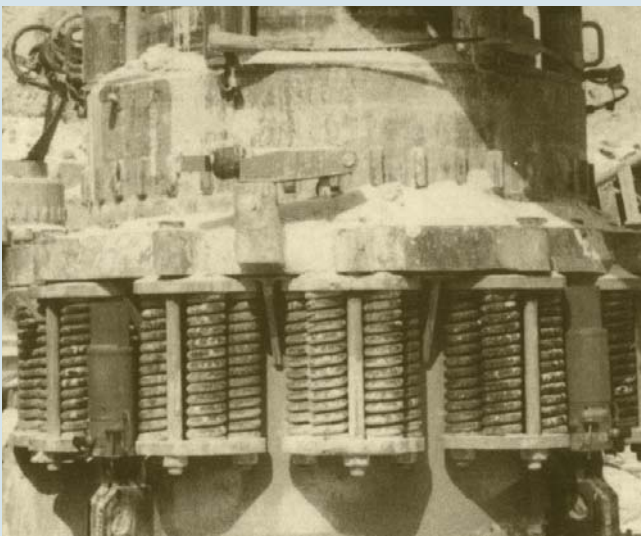
TCH-1041

- Stroke, 41mm
- Capacity, 10ton
- Center-Hole cylinder
- TECPOS

T E C P O S

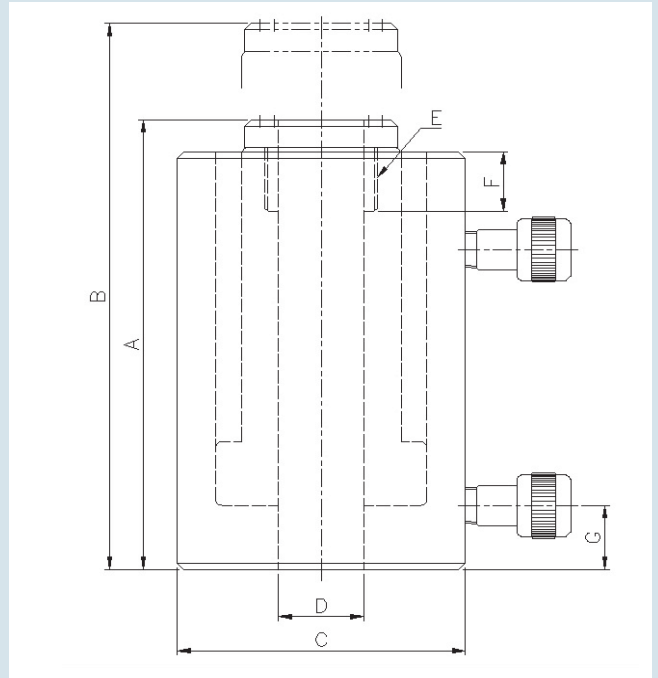
■ Specifications

Model	Cylinder Capacity (tons)	Stroke (mm)	Cylinder Effective Area (cm ²)	Oil Capacity (cc)	Retracted Height	Extended Height	Cylinder Out Dia.	Center Hole Dia.	Coller Thread	Coller Thread Length	Base to Inlet port	Weight (kgs)	Pump
					A	B	C	D	E	F	G		
TCH-1041	10	41	17.6	70.5	121	162	70	20	-	-	25	2.8	1B
TCH-2050	20	50	31.67	158.4	162	212	98	27	1 $\frac{9}{16}$	24	20	7.6	
TCH-3063	30	63	47.7	300.6	179	242	115	33	M48×P1.5	20	21	10.9	
TCH-5075	50	75	87.46	656	249	324	158	54	M70×P2	28	30	27.2	1C
TCH-10075	100	75	143.13	1049	254	329	216	80	M103×P2	28	35	52.5	



※ The above options are subject to change without prior notice

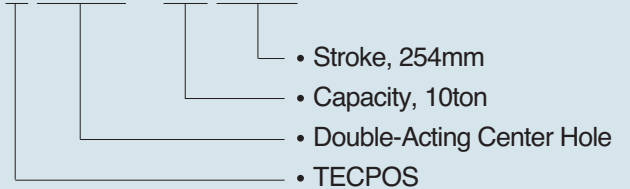
DOUBLE - ACTING CENTER HOLE CYLINDERS



- Capacity : 10 ~ 100tons
- Stroke : 156 ~ 254mm
- Maximum Pressure : 700 Bar
- Hydraulic Coupler : TBC 381F(PT3/8)
- Designed for use with screws, rods, cables, etc.

■ How to understand Model No.

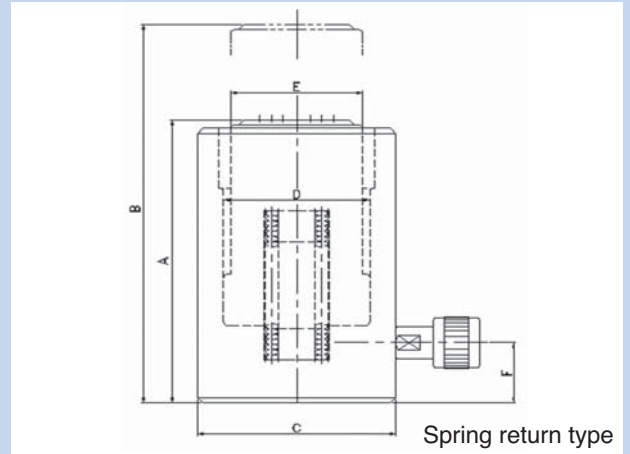
TDCH-10254



■ Specifications

Model	Cylinder Capacity (tons)	Stroke (mm)	Cylinder Effective Area (cm ²)	Oil Capacity (cc)	Retracted Height	Extended Height	Cylinder Out Dia.	Center Hole Dia.	Collar Thread	Collar Thread Length	Base to Inlet port	Weight (kgs)	Pump (double)
					A	B							
TDCH-10254	10	254	14.4	365	406	660	70	20	M32xP1.5	20	50	11	1B
TDCH-30210	30	210	44.2	928	425	635	115	33	M54xP2.5	50	55	28	1C
TDCH-50156	50	156	87.46	1365	380	536	158	54	M74xP2.0	36	55	42	
TDCH-100168	100	168	140.39	2358	382	550	216	80	M116xP3.0	50	65	79	3A

ALUMINUM CYLINDERS



- Capacity : 20 ~ 150 tons
- Stroke : 50 ~ 150mm
- Maximum Pressure : 700 Bar
- Hydraulic Coupler : TBC 381F(PT3/8)
- TECPOS Aluminum cylinders are almost half the weight of steel cylinders.

■ How to understand Model No.

TAR-2050

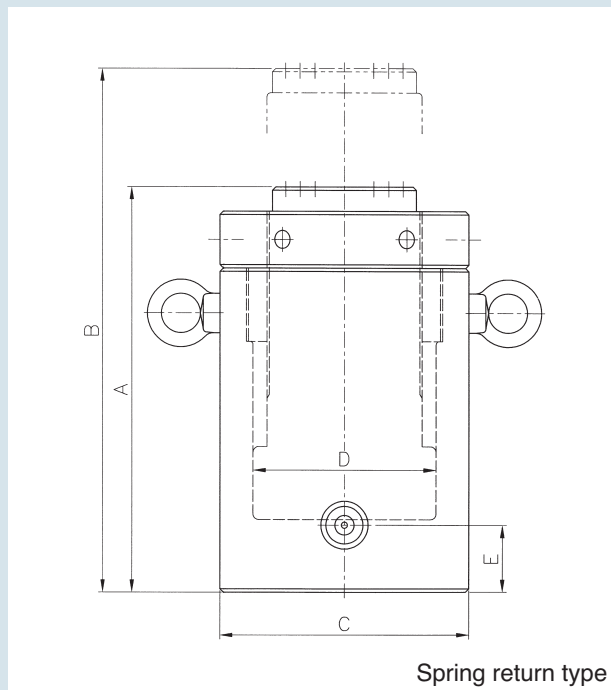
- Stroke, 50mm
- Capacity, 20ton
- Aluminum
- TECPOS

■ Specifications

Model	Cylinder Capacity (tons)	Stroke (mm)	Cylinder Effective Area (cm ²)	Oil Capacity (cc)	Retracted Height		Cylinder Out Dia. C	Cylinder Bore Dia. D	Piston Rod Dia. E	Base to Inlet port F	Weight (kgs)	Pump	
					A	B							
TAR-2050	20	50	28.3	145	150	200	89	60	54	28	3.2	1B	
TAR-20100		100		290	200	300							4.1
TAR-20150		150		435	250	400							
TAR-3050	30	50	44.2	220	168	218	108	75	65	35	5.1	1C	
TAR-30100		100		440	218	318							6.4
TAR-30150		150		660	268	418							
TAR-5050	50	50	70.9	355	182	232	134	95	85	35	8.7	1B	
TAR-50100		100		708	232	332							10.8
TAR-50150		150		1063	282	432							
TAR-10050	100	50	132.8	660	193	243	189	130	110	40	16.5	3A	
TAR-100100		100		1320	243	343							19.5
TAR-100150		150		1980	293	443							
TAR-15050	150	50	201.1	1005	208	258	238	160	135	45	27	3A	
TAR-150100		100		2010	258	358							33.4
TAR-150150		150		3016	308	458							

※ The above options are subject to change without prior notice

LOCK NUT CYLINDERS



- Capacity : 30 ~ 200 tons
- Stroke : 200 ~ 230mm
- Maximum Pressure : 700 Bar
- Hydraulic Coupler : TBC 381F(PT3/8)
- Cylinders are load return and spring return
- Particularly use in the building industry to support a bridge during construction

■ How to understand Model No.

TLN-30200

- Stroke, 200mm
- Capacity, 30ton
- Lock Nut cylinder
- TECPOS

■ Specifications

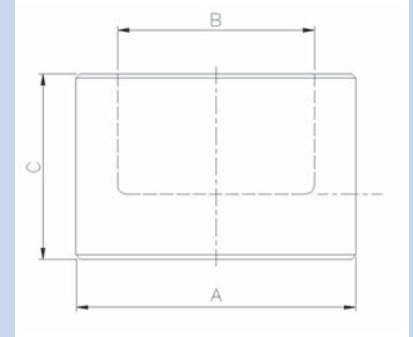
Model	Cylinder Capacity (tons)	Stroke (mm)	Cylinder Effective Area (cm ²)	Oil Capacity (cc)	Retracted Height	Extended Height	Cylinder Out Dia. C	Cylinder Bore Dia. D	Base to Inlet port E	Weight (kgs)	Pump
					A	B					
TLN-30200	30	200	44.1	883	365	565	102	75	35	23	1C
TLN-50200	50	200	70.8	1418	385	585	127	95	40	38	
TLN-100230	100	230	132.7	3052	475	705	168	130	50	75	3B
TLN-150230	150	230	213.8	4918	537	767	225	165	60	164	
TLN-200230	200	230	283.5	6521	552	782	255	190	65	224	

HYDRAULIC JACKS

· Propeller Fitting Jacks



- Capacity : 50 ~ 200tons
- Stroke : 10 ~ 20mm
- Maximum Pressure : 700-2000 Bar
- For use of mounting, demounting of marine propellers



■ Specifications

Model	Cylinder Capacity (tons)	Stroke (mm)	Cylinder Out Dia.	Cylinder Bore Dia.	Jack Height	Cylinder Effective Area (cm ²)	Max Pressure (Bar)
			A	B	C		
TPFJ-5012	50	12	127	95	85	70,8	700
TPFJ-10010	100	10	118	80	50	50,2	2000
TPFJ-10015	100	15	183	135	110	143,1	700
TPFJ-20020	200	20	245	190	130	298,6	700
TPFJ-20011	200	11	175	115	60	103,8	2000

· Disk Ram Type



- Capacity : 300 ~ 1500tons
- Stroke : 10 ~ 12mm
- Maximum Pressure : 700 Bar
- To fit marine propellers pressurizing by single Disk Ram Jack.

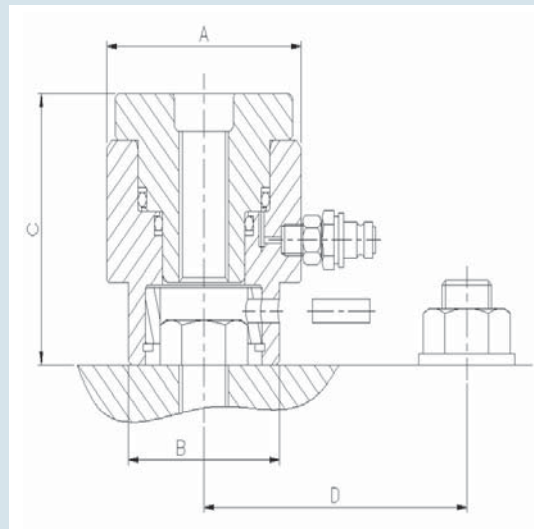
■ Specifications

Model	Cylinder Capacity (tons)	Stroke (mm)	Closed Height (mm)	Cylinder Effective Area (cm ²)	Weight (kgs)
TDR-30010	300	10	80	428,5	≒109,4
TDR-50010	500	10	90	714,2	≒179,5
TDR-80010	800	10	100	1142,8	≒280,4
TDR-100012	1000	12	110	1428,5	≒428,4
TDR-150012	1500	12	120	2142,8	≒569,1

※ The above options are subject to change without prior notice

HYDRAULIC JACKS

• Bolt Tensioners



- Capacity : 13.5 ~ 309 tons
- Stroke : 4-10mm
- Bolt Range : M20 ~ M100
- Maximum Pressure : 1000 ~ 1500 Bar
- Hydraulic Coupler : TBC 381F(PT3/8), CEjN(PF1/4)
- Fitted with single acting spring return cylinders for use of Bolts/Nuts connection

■ How to understand Model No.

T B T - M 2 0



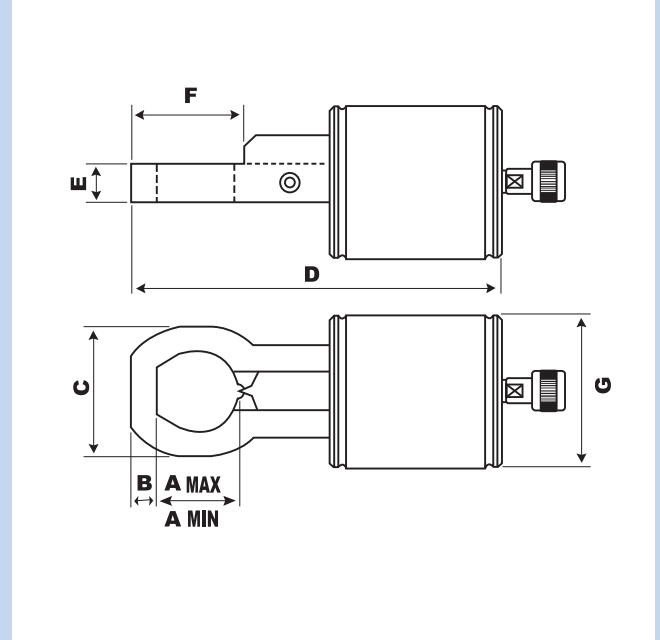
■ Specifications

Model	Max. Pressure (Bar)	Cylinder Capacity (tons)	Stroke (mm)	Dimension				Weight (Kgs)
				A	B	C	D	
TBT-M20	700 ~ 1500	13.5	4	76	49	77	48	2.2
TBT-M24			5	87	64	77	54	2.5
TBT-M30		26	6	110	79	84	70	4.2
TBT-M36		36		127	90	88	82	5.6
TBT-M42		44		153	107	108	98	10
TBT-M48		57		164	122	110	107	14
TBT-M56		87		195	140	135	126	21
TBT-M64		111		215	155	154	140	28
TBT-M72		150	8	250	177	170	161	44
TBT-M80		170		284	194	191	182	71
TBT-M90		220	10	318	220	212	204	90
TBT-M100		309		350	255	264	225	131

※ The above options are subject to change without prior notice

HYDRAULIC SPLITTERS

Nut Splitters

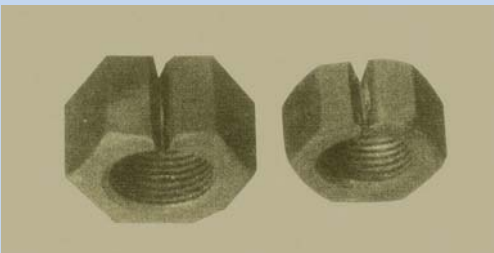


- Capacity : 14 ton & 32.5 ton
- Bolt Range : 14 ton(M12~M24)
32.5ton(M20~M33)
- Maximum Pressure : 700 Bar
- Hydraulic Coupler : TBC 381F(PT3/8)

How to understand Model No.

TNS-1415

- Stroke, 15 mm
- Capacity, 14 ton
- Nut splitter
- TECPOS



- Easily removing rusty nuts without damage to bolts

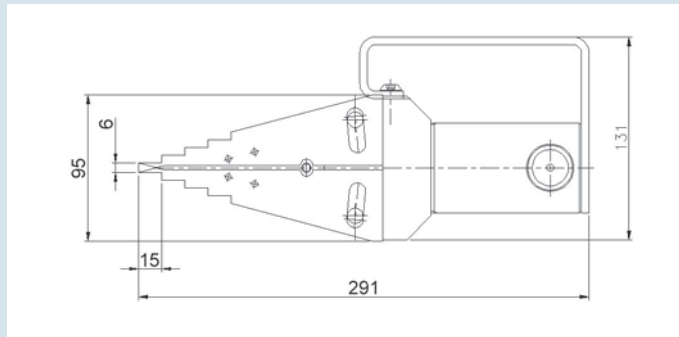
Specifications

Model	Cylinder Capacity (tons)	Stroke (mm)	Cylinder Effective Area (cm ²)	Oil Capacity (cc)	Dimension								Weight (Kgs)	Pump
					A MAX (mm)	A MIN (mm)	B (mm)	C (mm)	D (mm)	E (mm)	F (mm)	G (mm)		
TNS-1415	14	15	21,2	31,8	45	15	12,5	73	221	23	62,5	78	5,2	1B, 1/3HP
TNS-32.520	32,5	20	46,5	93	62	39	19	98	278	29	85	115	12	

※ The above options are subject to change without prior notice

HYDRAULIC SPLITTERS

Hydraulic Flange Spreader



■ How to understand Model No.

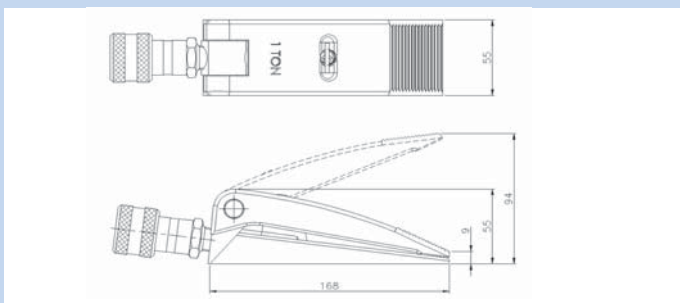
TFS - 661

- Max Spread 61 mm
- Tip Clearance 6 mm
- Hydraulic Spreader
- TECPOS



■ Specifications

Model	TFS 661
Application	Flange Spreading & Gasket exchange
Output Force	14Ton
Max. Spread	61mm
Tip Clearance	6mm
Maximum Pressure	700 Bar
Hydraulic Coupler	TBC 381F(PT3/8)
Weight	7.1Kg
Pump	THPA-1B or 1/3HP



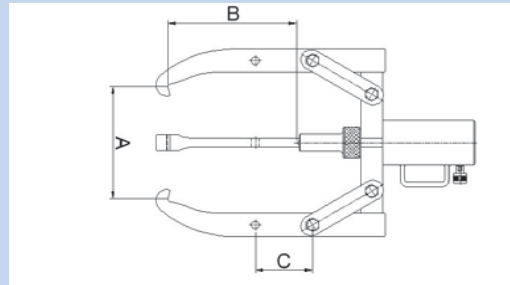
■ Specifications

Model	TFS 949
Application	Flange Spreading & Gasket exchange
Output Force	1Ton
Max. Spread	94mm
Tip Clearance	9mm
Maximum Pressure	700 Bar
Hydraulic Coupler	TBC 381F(PT3/8)
Weight	2.0Kg
Pump	THPA-1B or TPM-1/3-S

HYDRAULIC PULLERS



- Capacity : 10 ~ 50 tons
- Stroke : 150mm
- Maximum Pressure : 700 Bar
- Hydraulic Coupler : TBC 381F(PT3/8)
- Hydraulic pullers are used when removing bearing, gear or pulley from shafts



■ Specifications

Model	Cylinder Capacity (tons)	Stroke (mm)	Oil Capacity (cc)	Max. Spread (mm)	Max. Reach (mm)	Distance Between Hole	Weight (kgs)	Pump
				A	B	C		
TPUL-10	10	150	228	180	240	75	13,5	1B
TPUL-20	20	150	498	280	400	130	36,8	
TPUL-30	30	150	660	280	420	130	46,7	1C
TPUL-50	50	150	1070	360	520	150	85,3	



- This tool is for pulling out the connector (linked with orbit) when repairing orbit of various heavy equipments.

■ Specifications

Model	Cylinder (tons)	Stroke (mm)	Oil Capacity (cc)	Max Pressure (Bar)
TPUL-K1	17,8	73	570	700

※ The above options are subject to change without prior notice

Oil - L - JACKS



TLJ-52.5



TLJ-105

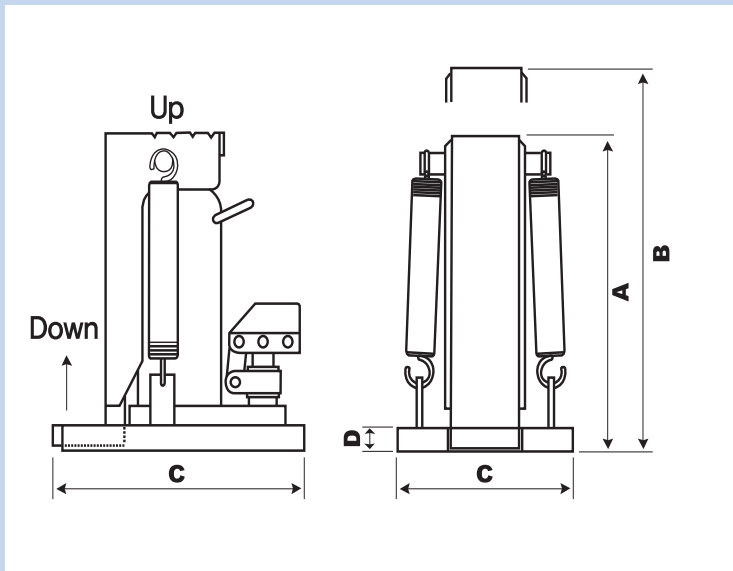


TLJ-2010



TLJ-3015

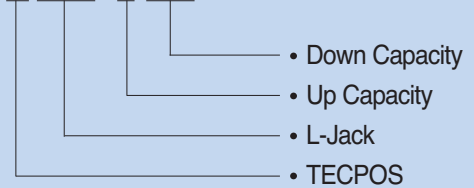
TECPOS



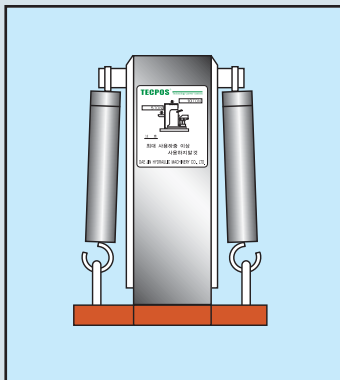
- Capacity : 5 ~ 30 tons
- Stroke : 120 ~ 160mm
- Maximum Pressure : 140 Bar
- For use in very confined work areas

■ How to understand Model No.

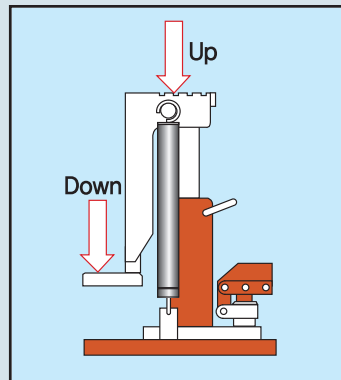
TLJ-52.5



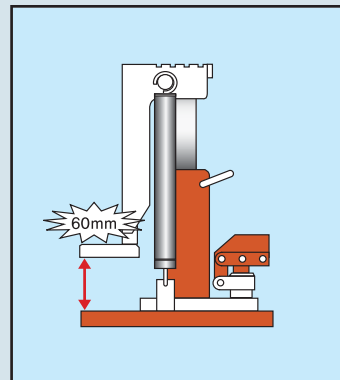
■ How to Use Oil-L-JACKS



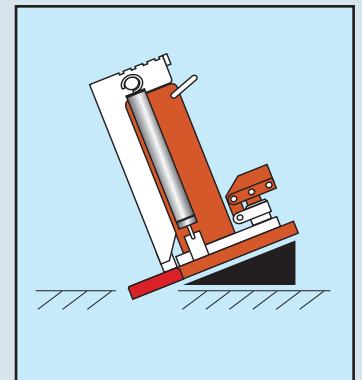
Never exceed the maximum capacity indicated.



When lifting an object, support the top in the center and press to the inside edge of the bottom plate.



Keep the stroke **less than 60mm** when lifting an object from the bottom.



Keep the Jack even at all times on level ground.

■ Specifications

Model	Cylinder Capacity		Stroke (mm)	Retracted Height	Extended Height	Base Dimension	Base Thickness	Weight (kgs)
	(Up)	(Down)		A	B		C	
TLJ-52.5	5	2.5	120	237	357	170×230	19	11
TLJ-105	10	5	150	286	436	188×260	22	19.1
TLJ-2010	20	10	160	327	487	242×280	28	33.6
TLJ-3015	30	15	160	352	512	273×308	32	51.2

※ The above options are subject to change without prior notice

HYDRAULIC TOOLS

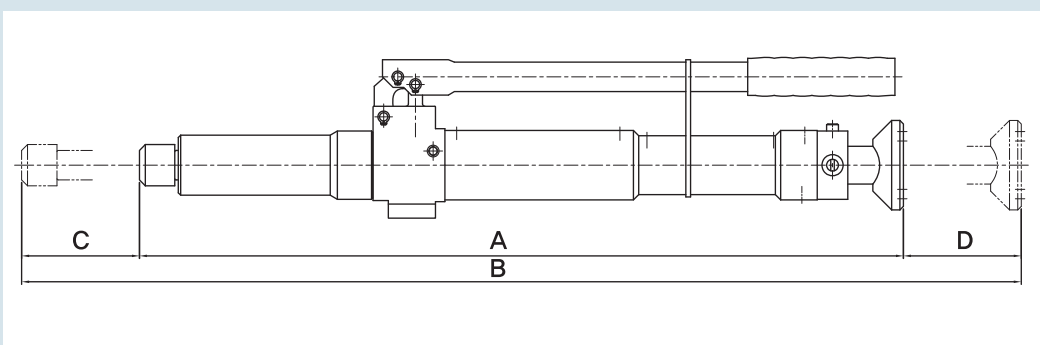
Welding Jack Pump



■ Standard



■ Special



- Capacity : 5 ~ 10 tons
- Stroke : 90mm ~ 200mm
- Maximum Pressure : 700 Bar
- Cylinders are load return "C" and spring return

■ Specifications

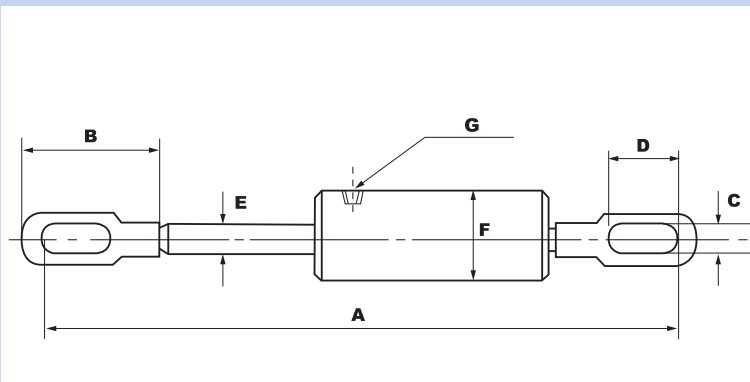
Model	Output Force (ton)	Output Piston Stroke(mm) – C	Output Saddle Stroke(mm) – D	Retracted Height (mm) – A	Extended Height (mm) – B	Weight (kgs)
TWJ 5-580	5	100	–	580	680	5.4
TWJ 5-650	5	100	100	650	850	6.7
TWJ 5-750	5	100	200	750	1050	7.6
TWJ 10-680	10	100	90	680	870	11

HYDRAULIC TOOLS

- Aluminum Pulling Jack



- Capacity : 10 ~ 100 tons
- Stroke : 150mm ~ 200mm
- Maximum Pressure : 700 Bar
- Hydraulic Coupler : TBC 381F(PT3/8)
- They are equipped with eyebolts and spring-return.
- Aluminum pulling jacks are almost half the weight of steel pulling jacks.
- This Jack is suitable for shipyards, large construction sites, such as welding jobs.



■ How to understand Model No.

TAPJ-10150

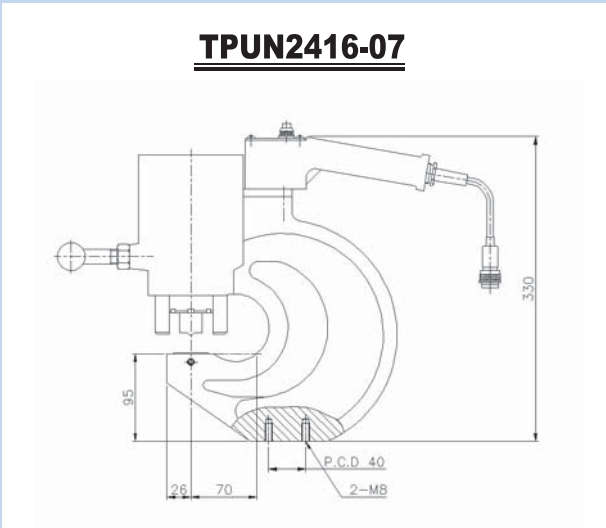
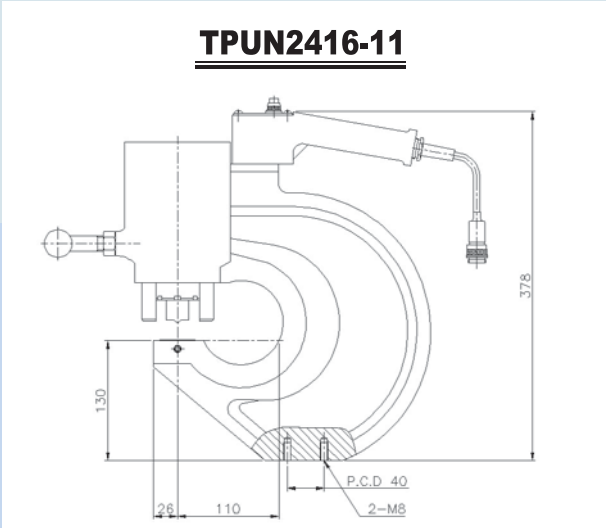
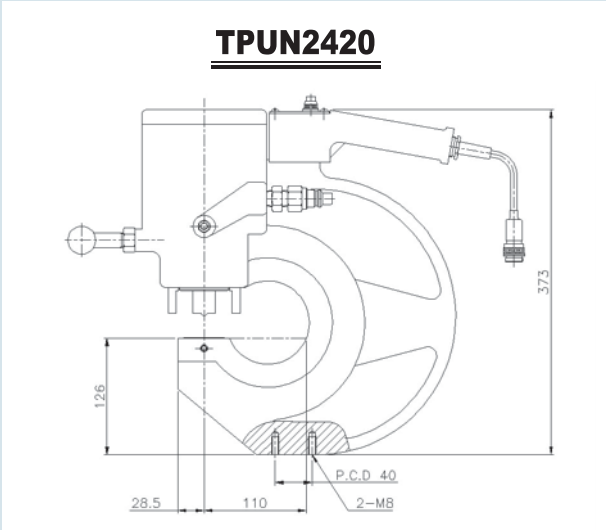
- Stroke, 150mm
- Capacity, 10ton
- Aluminum pulling Jack
- TECPOS

■ Specifications

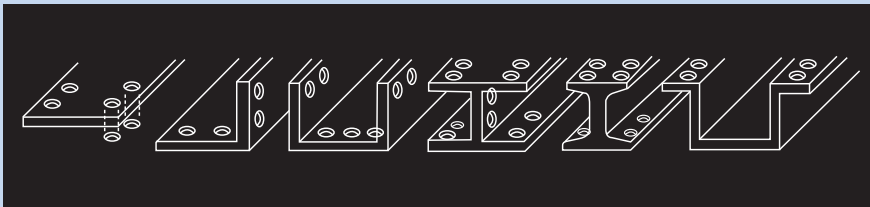
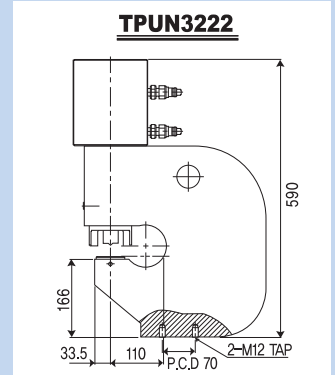
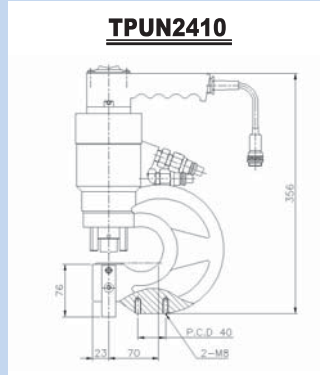
Model	Capacity (tons)	Stroke (mm)	Oil Capacity (cc)	Dimension							Weight (kgs)	Pump
				A	B	C	D	E	F	G		
TAPJ-10150	10	150	236	763	171	30	115	40	88	PT 3/8"	10.3	1B, 1/3HP
TAPJ-20150	20	150	424	807	215	35	120	45	108		13.5	
TAPJ-30150	30	150	660	849	226	44	110	50	125		19	
TAPJ-30200	30	200	880	949	226	44	110	50	125		23	1C, 1/2HP
TAPJ-50150	50	150	1082	897	273	50	150	54	158		34	
TAPJ-50200	50	200	1443	997	273	50	150	54	158		36	2B, 1/2HP
TAPJ-100150	100	150	2076	1101	380	51	200	80	238		95	

※ The above options are subject to change without prior notice

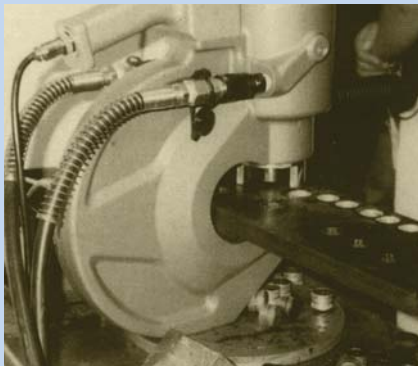
HYDRAULIC PUNCH



TECPPOS



- Capacity : 32 ton, 47 ton, 60 ton, 85 ton
- Maximum Punching Diameter : $\varnothing 32$
- Maximum Pressure : 700 Bar
- Punching through I-Beams, H-Beams, Mild steel, etc.
- Hydraulic Coupler : TBC 384WM(PT3/8)



■ Specifications

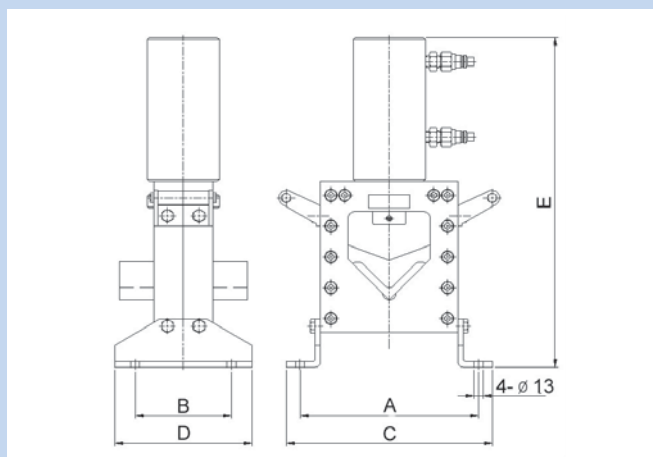
Model	Max. Punching Diameter (\varnothing)	Max. Punching Thickness (mm)	Max. Center Depth (mm)	Time for 1 Hole		Cylinder Capacity (tons)	Weight (kgs)	Pump
TPUN-2410	22	10	70	1HP	6sec	32	13	1HP Single
TPUN-2410	22	10	70	1HP	6sec	32	13	1HP Double
TPUN-2416-07	24	16	70	2HP	5sec	47	21	2HP Double
TPUN-2416-11	24	16	110	2HP	5sec	47	28	
TPUN-2420	24	20	110	3HP	6sec	60	34	2.3HP Double
TPUN-3222	32	22	110	3HP	6sec	85	135	3.5HP Double

Standard Punch & Die	TPUN-2410	$\varnothing 10.5, \varnothing 13.5, \varnothing 17.5, \varnothing 20.5$
	TPUN-2416	$\varnothing 18, \varnothing 20, \varnothing 22, \varnothing 24$
	TPUN-2420	$\varnothing 18, \varnothing 20, \varnothing 22, \varnothing 24$
	TPUN-3222	$\varnothing 26, \varnothing 28, \varnothing 30, \varnothing 32$

※ The above options are subject to change without prior notice

HYDRAULIC TOOLS

· Angle Cutters



- Capacity : 20 ~ 50 tons
- Strokes : 45~70 mm
- Maximum Pressure : 700 Bar
- Angle cutters available with hand or electric pumps
- Hydraulic Coupler : TBC 384WM(PT3/8)



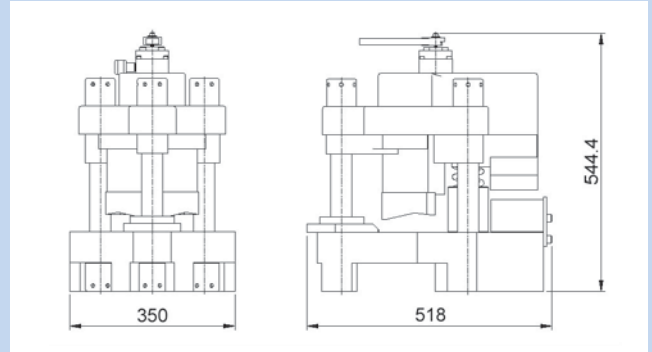
■ Specifications

Model	Cylinder Capacity (tons)	Stroke (mm)	Oil Capacity (cc)	Max. angle	Pump	Dimension (mm)					Weight (kg)
						A	B	C	D	E	
TAC-50	20	45	150	50X50X6T	1/2HP Double	200	120	240	180	366	18
TAC-75	30	65	288	75X75X10T		260	140	300	200	481	37
TAC-100	50	70	497	100X100X13T	1HP Double	360	220	420	300	596	78

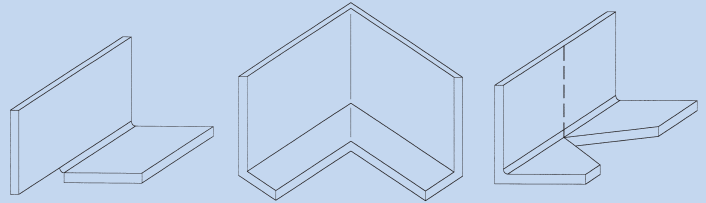
※ The above options are subject to change without prior notice

HYDRAULIC TOOLS

- Notching Machine



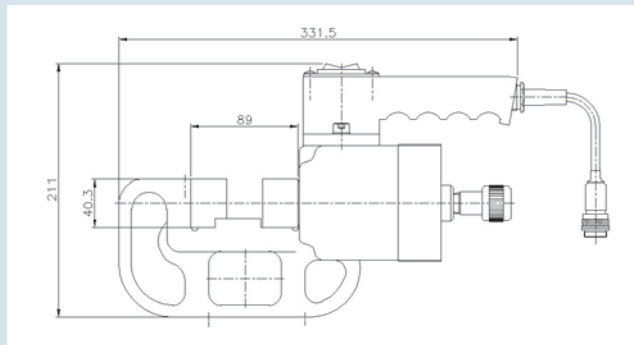
- Hydraulic Coupler : TBC 384WM
- Maximum Pressure : 700 Bar



■ Specifications

Model	Max Cutting Thickness (mm)	Max Angle	Cutting Capacity (ton)	Bending Capacity (ton)	Suitable Pump	Weight (kgs)
TNC-100	10	100×100×10T	44,5	30	2HP Single Sol	185

- Rod Cutter



- Capacity : 30 tons
- Strokes : 30 mm
- Maximum Pressure : 700 Bar
- Round Bar cutters available with hand or electric pumps
- Hydraulic Coupler : TBC 381F(PT3/8)

■ Specifications

Model	Output Force (ton)	Stroke (mm)	Max Cutting DIA (ø)	Suitable Pump	Weight (kgs)
TRC 25	30	30	25	1/2HP Single Sol	9

※ The above options are subject to change without prior notice

HYDRAULIC HAND PUMPS



- Reservoir Capacity : 280-10000cc
- Volume per stroke : High Pressure : 0.5~4.7 cc/stroke
Low Pressure : 5~85 cc/stroke

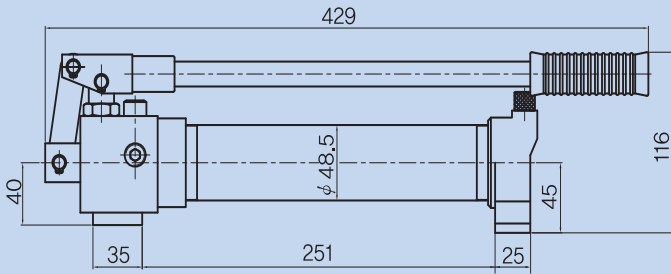
- Maximum Pressure : 700 Bar
- To order double acting hand pump add the letter "D" to the model No. ex) THP-2B-D

■ Specifications

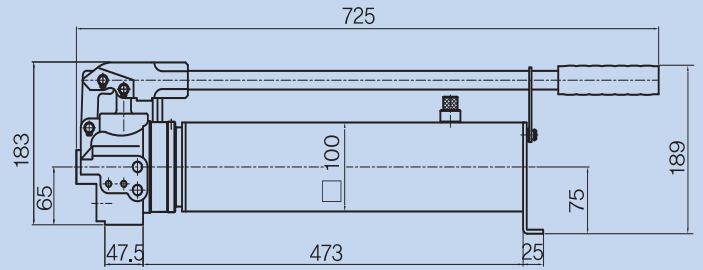
Model	Reservoir Capacity (cc)	Volume per stroke (cc)		Piston Dia. (mm)		Piston stroke(mm)	Weight (kgs)	The auality of the material	Working Pressure(kgf/cm ²)
		High Pressure	Low Pressure	High Pressure	Low Pressure				
THP-1A	280	1.0		10		14.5	4		700
THPA-1B	800	2.0	13.0	11	28	20.5	4	ALUMINUM	
THPA-1C	1600	2.0	16.5	11	32		8	ALUMINUM	
THP-2B	2300	2.3	31	12	44		10.5	ALUMINUM	
THP-3A	3000	2.3	31	12	44		12.5		
THP-3B	10000	4.7	85	14	60	30	50		
THP-28	1500	0.5	11.7	5.5	28	19	6.1	ALUMINUM	2800

※ The above options are subject to change without prior notice

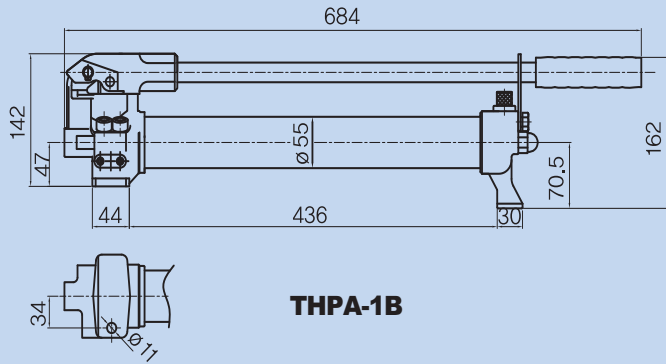
HYDRAULIC HAND PUMPS



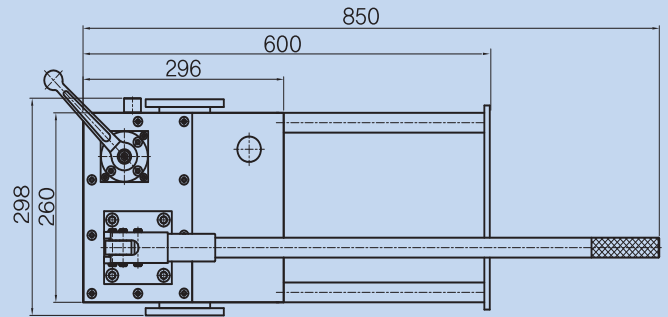
THP-1A



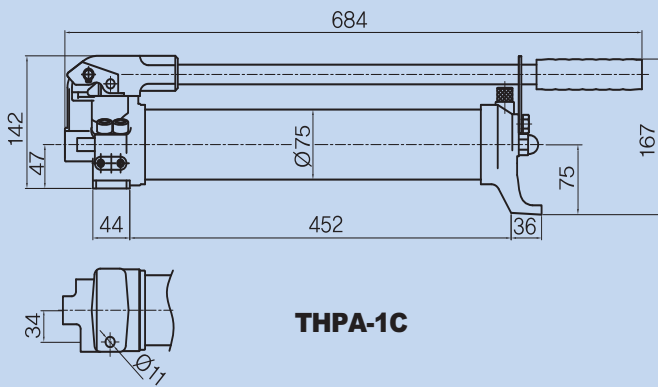
THP-3A



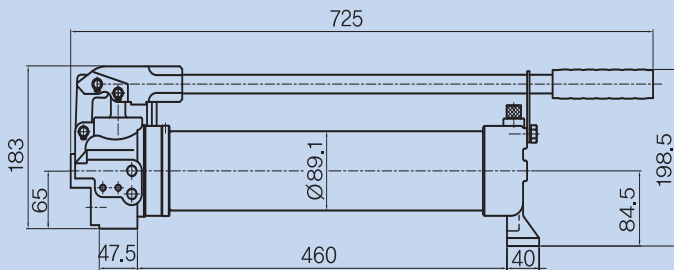
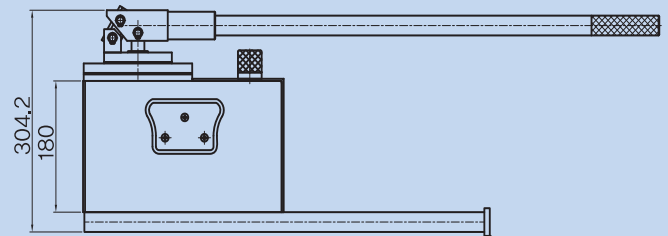
THPA-1B



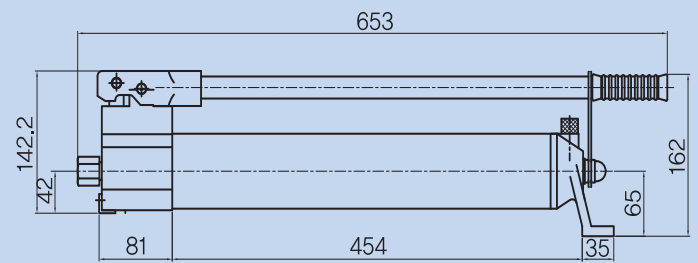
THP-3B



THPA-1C



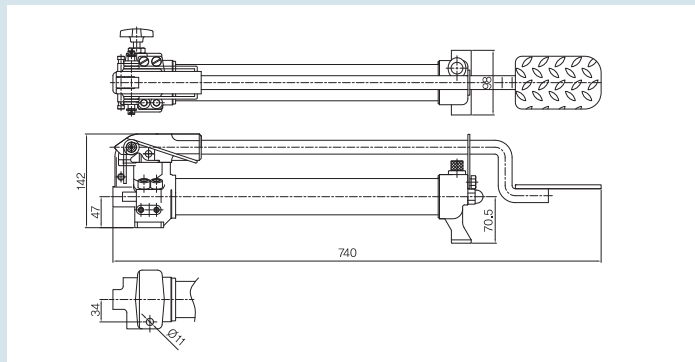
THP-2B



THP-28

HYDRAULIC FOOT PUMPS

• Foot Pump

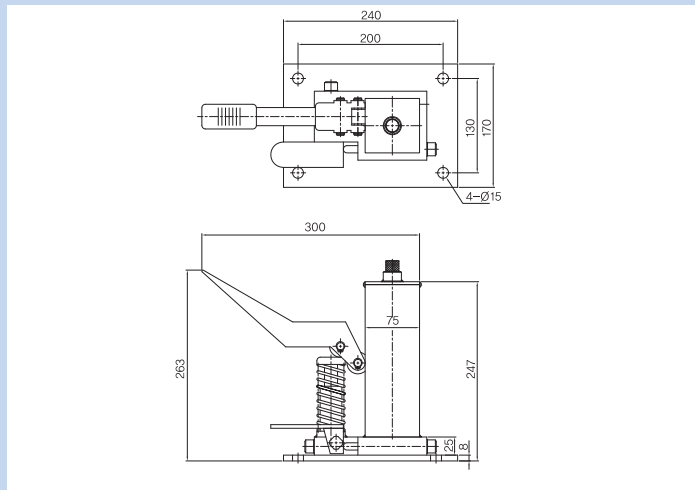


- Reservoir Capacity : 800-1600cc
- Volume per stroke : High Pressure 2cc/stroke
Low Pressure 13~16.5cc/stroke
- Maximum Pressure : 700 Bar

■ Specifications

Model	Reservoir Capacity (cc)	Volum per stroke Capacity		Piston Dia. (mm)		Piston stroke (mm)	Weight (kgs)
		High Pressure	Low Pressure	High Pressure	Low Pressure		
THPF-1B	800	2.0	13.0	11	28	20.5	4
THPF-1C	1600	2.0	16.5	11	32		8

• Foot Pump



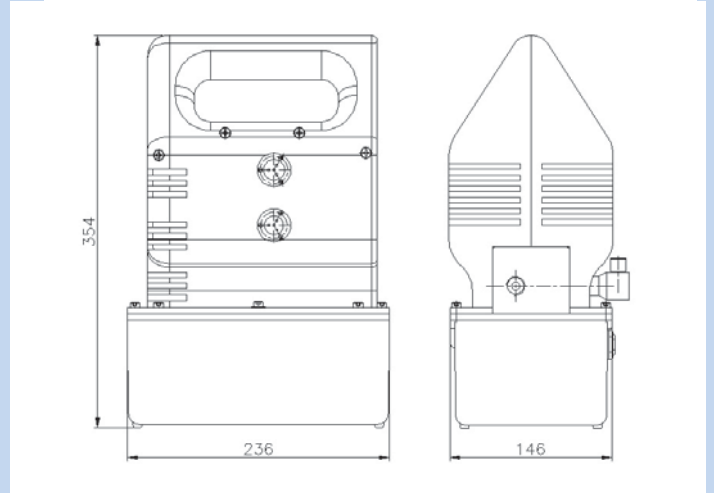
- Maximum Pressure : 210 Bar
- Selection pump : To use 30% more than cylinder oil capacity

■ Specifications

Model	Reservoir Capacity (cc)	Volume per stroke (cc)	Piston DIA (mm)	Piston stroke (mm)	Weight (kgs)
TFP-720	720	7.63	18	30	12

MINI PUMP

- AC Pump

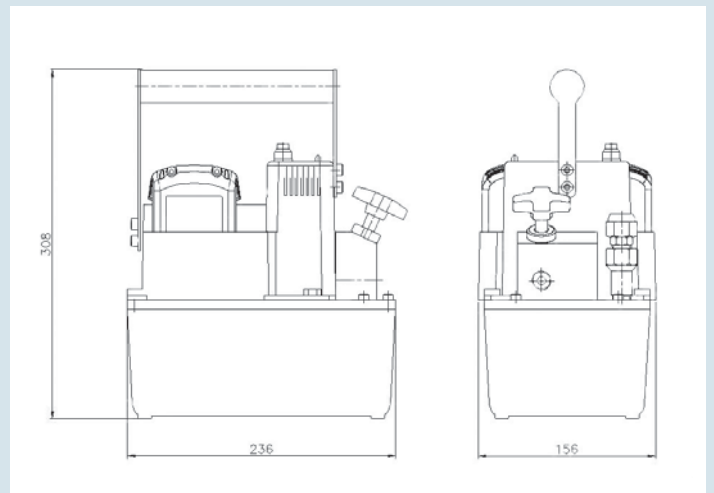


■ Specifications

- Maximum Pressure : 700 Bar
- Remote Control Type

Model	Pressure Capacity (Bar)		Output Flow Rate (l /min)		Voltage (v)	Require oil (liter)	Weight (kgs)
	High Pressure	Low Pressure	High Pressure	Low Pressure			
TMPM-1/3-2L	700	70	0.3	2.5	220v single	2	6.8

- DC Pump(Battery Operated)



■ Specifications

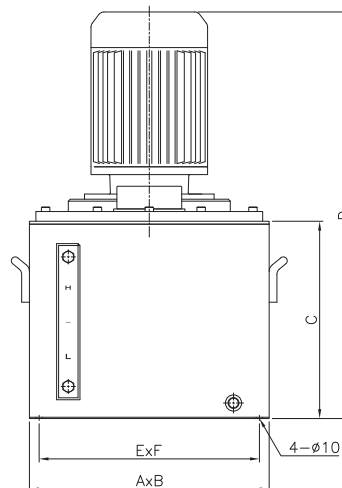
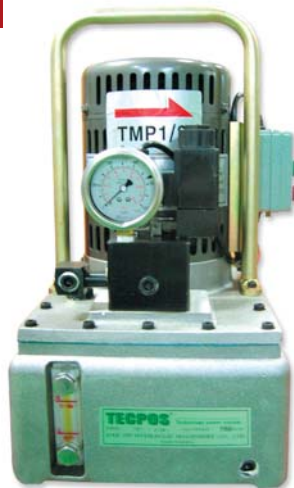
- Battery : Li-thiumion
- Maximum Pressure : 700 Bar
- Cock Type

Model	Pressure Capacity (Bar)	Output Flow Rate (l /min)	Voltage (v)	Require oil (liter)	Weight (kgs)
TDPM-1/3	700	1.0	14.4V 3.0Ah	2	7

ELECTRIC HYDRAULIC PUMPS

· Electric Hydraulic Pumps(700 Bar)

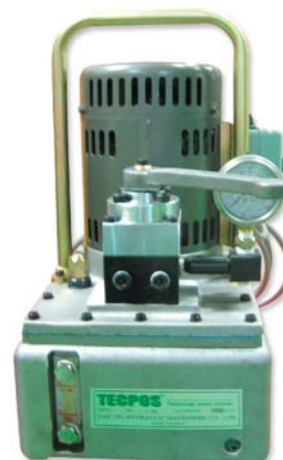
Single Sol Type



Cock Type



Manual Type



Double Sole Pilot c/v Type



Double Sole Type



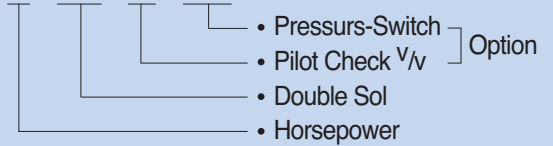
T E C P O S

Dimension Model	A×B	C	D	E×F
TMP 1/3	185×315	120	405	160×296
TMP 1/2	240×310	134	440	210×275
TMP 1	240×310	188	470	208×278
TMP 2	320×420	248	650	263×364
TMP 3	370×515	305	640	340×516
TMP 5	370×515	405	750	340×516

- Reservoir Capacity : 5.5 ~ 69.5 liter
- Output Flow Rate : 0.2 ~ 3 l/min
- Maximum Pressure : 700 Bar
- For use of both single and double acting cylinders.
- To order solenoid valve add the letter "S" to the model No. ex) TMP2-S

■ How to understand Model No.

TMP 2 - 2S - P - P/S



■ Specifications

Model	Model	Pressure Capacity (Bar)		Output Flow Rate (l/min)		Voltage (V)	Electric Motor			Require Oil (liter)	Reservoir Capacity (liter)	Weight (kgs)
		High Pressure	Low Pressure	High Pressure	Low Pressure		(Kw)	(Pole)	(RPM)			
TMP 1/3-M	MANUAL	700	70	0.2	2	220V SINGLE	0.25	4	1720	3.5	5.5	22
TMP 1/3-S	SINGLE SOLENOID	700	70	0.2	2	220V SINGLE	0.25	4	1720	3.5	5.5	22
TMP 1/2-M	MANUAL	700	70	0.43	2.58	220V SINGLE	0.4	4	1720	5	7.4	35
TMP 1/2-S	SINGLE SOLENOID	700	70	0.43	2.58	220V SINGLE	0.4	4	1720	5	7.4	35
TMP 1/2-2S	DOUBLE SOLENOID	700	70	0.43	2.58	220V SINGLE	0.4	4	1720	5	7.4	35
TMP 1-M	MANUAL	700	70	0.73	4.3	220V SINGLE	0.75	4	1720	11	15.8	50
TMP 1-S	SINGLE SOLENOID	700	70	0.73	4.3	220V SINGLE	0.75	4	1720	11	15.8	50
TMP 1-2S	DOUBLE SOLENOID	700	70	0.73	4.3	220V SINGLE	0.75	4	1720	11	15.8	50
TMP 2-M	MANUAL	700	130	1.32	6	220V & 380V 3-PHASE	1.5	4	1720	23	34	82
TMP 2-2S	DOUBLE SOLENOID	700	130	1.32	6	220V & 380V 3-PHASE	1.5	4	1720	23	34	82
TMP 3-M	MANUAL	700	130	1.8	9	220V & 380V 3-PHASE	2.2	4	1720	36	52	103
TMP 3-2S	DOUBLE SOLENOID	700	130	1.8	9	220V & 380V 3-PHASE	2.2	4	1720	36	52	103
TMP 5-M	MANUAL	700	130	2.97	13.3	220V & 380V 3-PHASE	3.7	4	1720	48	69.5	142
TMP 5-2S	DOUBLE SOLENOID	700	130	2.97	13.3	220V & 380V 3-PHASE	3.7	4	1720	48	69.5	142

※ The above options are subject to change without prior notice

ELECTRIC HYDRAULIC PUMPS

· Electric Hydraulic Pumps(2,500 Bar)



■ Specifications

Model	Model	Pressure Capacity (Bar)		Output Flow Rate (l/min)		Voltage (V)	Electric Motor			Require Oil (liter)	Reservoir Capacity (liter)	Weight (kgs)
		High Pressure	Low Pressure	High Pressure	Low Pressure		(Kw)	(Pole)	(RPM)			
TMP 3-M2000	MANUAL	2000	100	0.46	6.2	220 & 380 V 3-PHASE	2.2	6	1200	36	52	103
TMP 3-C2000	COCK	2000	100	0.46	6.2	220 & 380 V 3-PHASE	2.2	6	1200	36	52	103
TMP 5-C2500	COCK	2500	100	0.6	6.2	220 & 380 V 3-PHASE	3.7	6	1200	48	69.5	142
TMP 5-S2500	SINGLE SOL	2500	100	0.6	6.2	220 & 380 V 3-PHASE	3.7	6	1200	48	69.5	142

Hand Pump

- Maximum Pressure : 700 ~2800 Bar
- Oil Capacity : To use 30% more than cylinder oil

Hydraulic Hose

- Maximum Pressure : 700~2500 Bar
- Shorter length recommended
- Standard length 1.8m (700 Bar)



Hydraulic Oil

- Oil Density :
 - Warm Area : #46
 - Cold Area : #32
 - HAND Pump Area : #10, #15

Pressure Gauge

- Dia Size : 64mm & 100 Bar. PT1/4
100mm & 1000 Bar. PF1/2
100mm & 2500 Bar. PF1/2
100mm & 3000 Bar. PF1/2



TECPOS

HYDRAULIC TOOLS

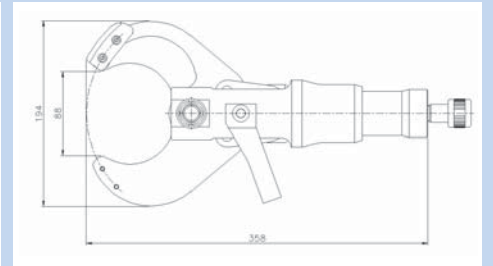
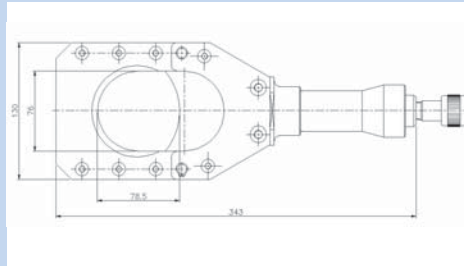
- Cable Cutter



■ How to understand Model No.

TCC75-N

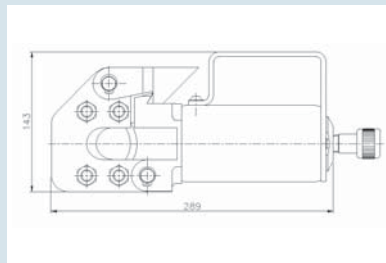
- Without Pump
- Cable Dia
- Cable Cutter
- TECPOS



- Maximum Pressure : 700 Bar
- Hydraulic Coupler : TBC 381F(PT3/8)

Model	Capacity (Tons)	Strokes (mm)	Features (mm)	Dimension Size (mm)	Suitable Pump	Weight (kgs)	Pump
TCC75-N	4	80	75	338	HAND PUMP or ELECTRIC PUMP	6.5	1B, 1/3HP
TCC75	4	80	75	780	WITH PUMP	7.8	
TCC100-N	8	110	100	463	HAND PUMP or ELECTRIC PUMP	7.2	1B
TCC85-N	7.5	43	85	365	HAND PUMP or ELECTRIC PUMP	4.8	

- Wire Cutter



■ How to understand Model No.

TCT32-N

- Without Pump
- Wire Dia
- Wire Cutter
- TECPOS

- Maximum Pressure : 700 Bar
- Hydraulic Coupler : TBC 381F(PT3/8)

Model	Capacity (Tons)	Strokes (mm)	Features (mm)	Dimension Size (mm)	Suitable Pump	Weight (kgs)
TCT32-N	20	40	32	288	HAND PUMP or ELECTRIC PUMP	8.8

※ The above options are subject to change without prior notice

HYDRAULIC TOOLS

Hydraulic Knockout Punch



- Punching Capacity : 1/2" ~ 4"
- Cylinder Capacity : 10ton
- Maximum Pressure : 800 Bar
- Hydraulic Coupler : TBC 381F(PT3/8)



■ How to understand Model No.

TKOP-2"

- Model No. Size
- Knockout Punch
- TECPOS

Specifications

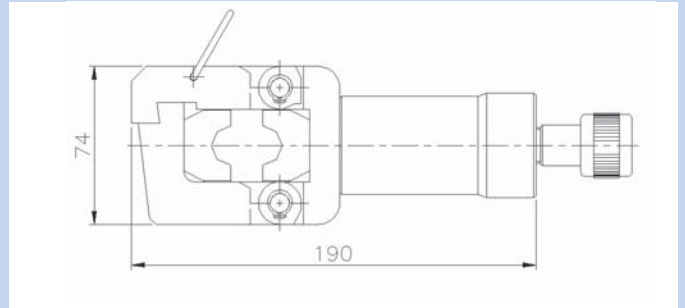
Model No.	Capacity(Tons)	Punching Thickness(mm)		Max. Punching dia.(mm)	Weight(kgs)
		SS400이하	SUS		
TKOP-2	10	3.2	1.6	1/2" - 2"	14
TKOP-4	10			1/2" - 4"	22

Size	Punching dia Ø	Cable O-D Ø	Screw	TKOP-15
B16(1/2)"	21.8	21.0	7/16" X 20S	After make a hole with a Ø11mm drill, B16(1/2) punch is used to entarge drill hole.
B22(3/4)"	27.6	26.5	3/4" X 16S	
B28(1)"	34.1	33.3		
B36(1 1/4)"	42.7	41.9		
B42(1 1/2)"	48.7	47.8		
B54(2)"	60.5	59.6		
B70(2 1/2)"	76.1	75.2	1" X 12S	
B82(3)"	88.9	87.9		
B104(4)"	115.5	113.4		

※ The above options are subject to change without prior notice

HYDRAULIC TOOLS

- Terminal & Hose Crimping Press

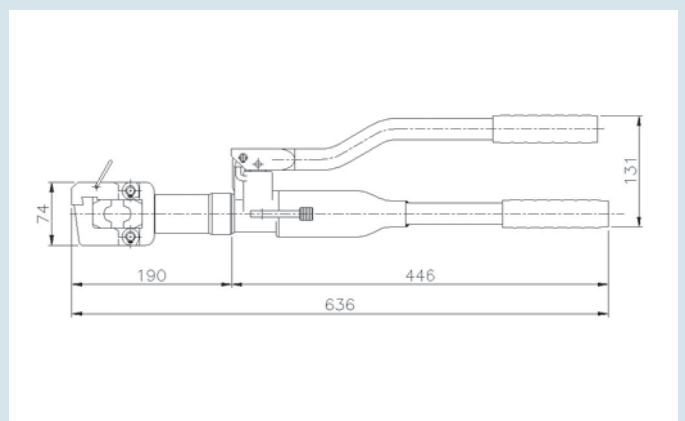


- Maximum Pressure : 700 Bar
- Hydraulic Coupler : TBC 381F(PT3/8)

■ Specifications

Model	Output Force (ton)	Output Piston Stroke(mm)	Features	Suitable Pump	Weight (kgs)
TPC150-N	6	13	AIR-1/2, GAS-5/16 16, 25, 35, 50, 70, 95, 120, 150	1B, 1/3HP	1.8

- Terminal & Hose Crimping Press



- Maximum Pressure : 700 Bar

■ Specifications

Model	Output Force (ton)	Output Piston Stroke (mm)	Features	Weight (kgs)
TPC150	6	13	AIR-1/2, GAS-5/16 16, 25, 35, 50, 75, 95, 120, 150	3,2

※ The above options are subject to change without prior notice

TERMINAL CRIMPING PRESS



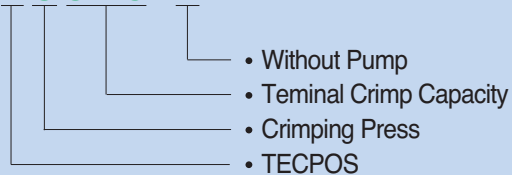
Model	TC 325-N
Output Force	13Ton
Max. Spread	30mm
Size(L)	240mm
Weight	4Kg
Features	Terminal Crimp 16~400mm ² (Hexagon Dies)
	JIS 14, 22, 38, 60, 80, 100, 150, 200, 250, 325
	IEC 16 ,25, 35, 50, 70, 95, 120, 150, 185, 240, 300, 400
Pump	THPA-1B or TPM-1/3S



Model	TC 325
Output Force	13Ton
Max. Spread	30mm
Size(L)	676mm
Weight	6.3Kg
Features	Terminal Crimp 16~400mm ² (Hexagon Dies)
	JIS 14, 22, 38, 60, 80, 100, 150, 200, 250, 325
	IEC 16 ,25, 35, 50, 70, 95, 120, 150, 185, 240, 300, 400

■ How to understand Model No.

TC 325-N



- Maximum Pressure : 700 Bar
- Hydraulic Coupler : TBC 381F(PT3/8)



TERMINAL CRIMPING PRESS



- Capacity : 30 tons
- Stroke : 30mm
- Maximum Pressure : 700 Bar
- Hydraulic Coupler : TBC 381F(PT3/8)
- Dies Hexagon
- To crimp various cable terminals by hydraulic Pressing
- Basic : 5EA
- Dies : 180~200, 240, 250, 325, 400~500

■ How to understand Model No.

TTCP-500

- Capacity(500mm²)
- Terminal Crimping Press
- TECPOS

■ Specifications

Model	Terminal Cop Range	Cylinder Capacity (tons)	Standard		Weight (kgs)	Pump
			Male	Female		
TTCP-500	8-500	30	HEXAGON 8-500	HEXAGON 8-500	15,2	1B, 1/3HP

■ Standard Sets

Normal Size	Male / Female Dies	Normal Size	Male / Female Dies
8~14-12	8~14-12	180~200-32	180~200-32
22~38-14	22~38-14	240-36	240-36
45~70-19	45~70-19	250-38	250-38
75~100-23	75~100-23	325-42	325-42
110~125-26	110~125-26	400~500-47	400~500-47
150-29	150-29		

PORTABLE BATTERY OPERATED TOOLS

TBCP-325-32



TBCP-325-40



- Basic date
 - Battery : 1EA
 - Charger : 1EA (220V전용)
 - Dies : 5EA
 - Dies Standards : 150, 185, 240, 300, 400

TBCP-150



- Basic date
 - Battery : 1EA
 - Charger : 1EA (220V전용)
 - Dies : 8EA
16, 25, 35, 50, 70, 95, 120, 150
 - Air-1/2, Gas-5/16

PORTABLE BATTERY OPERATED TOOLS

TBCC-85



TBCC-55



TBCP-22



■ Specifications

Model	Capacity	Maximum Pressure	Features	Power	Dimension	Weight(kgs)	Remarks
TBCP-325-32	12ton	700	JIS 14~325 SQ	DC 18V, 3.0AH	425×314×80	6.7	Terminal Crimping Press
TBCP-325-40	12ton	700	IEC 16~400 SQ		434×314×80	7.3	
TBCP-150	7.5ton	700	16~150 SQ	DC 14.4V, 3.0AH	360×300×80	4	
TBCP-22	1.5ton	250	1.25 SQ ~ 22 SQ		320×320×80	3.05	
TBCC-85	7.5ton	700	∅85		520×400×80	6.2	Cable Cutter
TBCC-55	7.5ton	700	∅55		440×370×80	4.2	

TPUN-1705



- Standard Hole Punch Size : ϕ 10.5, ϕ 13.5, ϕ 17.5
- Max. Punching Thickness : 5mm
- Battery : 1EA
- Charger : 1EA (220V only)
- Maximum Pressure : 700 Bar

■ Specifications

Model	Capacity	Features	Power	Dimension	Weight(kgs)
TPUN-1705	12 ton	ϕ 17.5×5t (SS400)	DC 14.4V 3.0AH	420×315×65	6.9

※ The above options are subject to change without prior notice

STAINLESS PIPE JOINT TOOL

- Rechargeable, DC Converter GUN type

Rechargeable, DC Converter(Type : GUN)



13, 20, 25, JOINT ASS'Y



- Hydraulic Pump Type

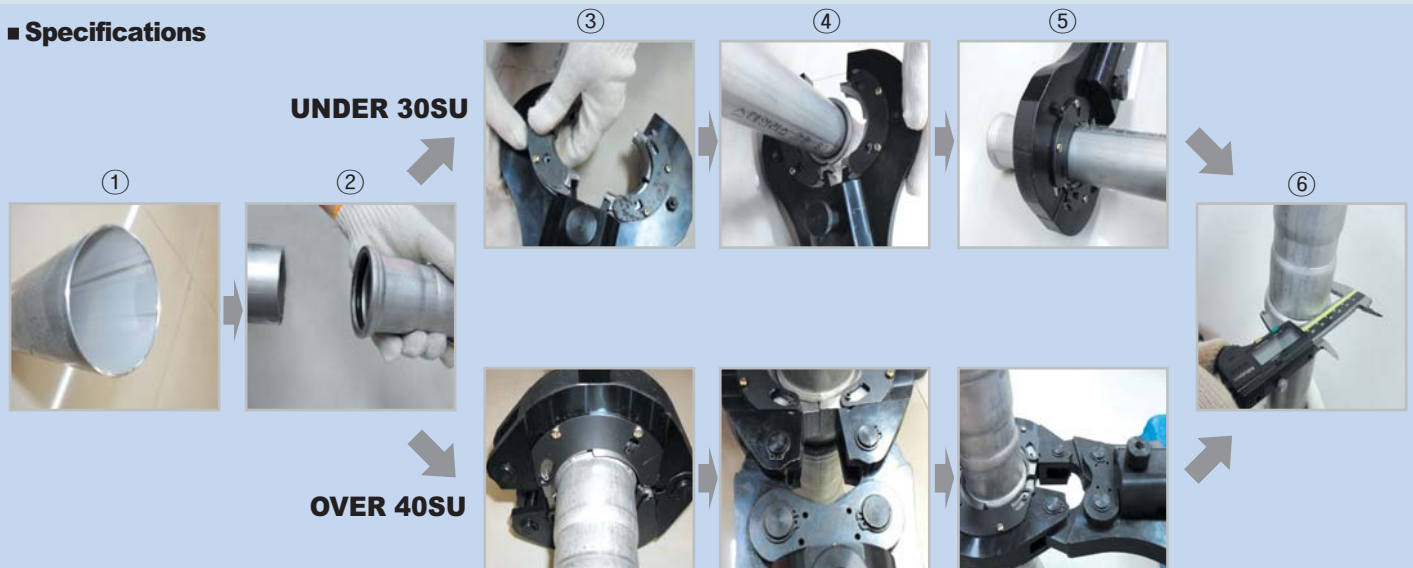
HAND JOINT ROTATION ASS'Y



30, 40, 50, 60 JOINT ASS'Y



■ Specifications



※ The above options are subject to change without prior notice

STAINLESS PIPE JOINT TOOL

- How to use JOINT TOOL

1. Application Criteria

- Stainless steel pipe for ordinary piping(KS D 3595) 13 ~ 100 SU, SCH/5(KS D 3576) can be used over the 80 SU.

2. Application Range

- Piping pipe for water supply and cooling/heating pipe, water supplying pipe inside of the structure, plumbing in the ship.

3. The Material

- STS 304, 316L, application of K-Type pipe

4. Usage(Picture for a clear explanation)

- 1) Cut off the pipe
 - Cut off the pipe as user wants.(The pipe edge must be perpendicular from tools.)
- 2) Scrape the BURR
 - The BURR must be scraped the BURR on the edge pipe, it will damage the rubber-ring(O-ring) when pipe inserted, That causes the water leak.
- 3) Insert
 - Insert pipe into fittings straight with an eye to getting damaged of rubber-ring(O-ring).
- 4) Assemble a reasonable joint at the tool.
- 5) Compress
 - Compress joint with joint tool(operated by portable or electric motor pump) on insertion pipe into fittings.
- 6) Check out the dimension of compressed part.

5. How to Check and Test

- 1) Checking
 - Check that if it was compressed as circle form or appeared double circular grooves clearly and then check out the dimension with a fig for testing or vernier calipers
- 2) Testing
 - After the completion of a work, apply water pressure to product(3~4 times of common pressure), at this time, check a leak.

6. Matters that require attention

- 1) BURR must be removed by a rasp or a grinder after cutting the pipe.
- 2) Clean the pipe before insertion pipe into fittings.
- 3) Insert pipe into fittings straight with an eye to getting damaged of rubber-ring(O-ring), unless it insert smoothly, user put water or something on rubber-ring(O-ring) for inserting smoothly.
- 4) When operating electric motor pump, check out the air vents(it must be opened) and a mount of oil.

STAINLESS PIPE JOINT TOOL

- Squeezed after dimension

Standards	Outside Diameter Pipe	Measurement before pressing	Measurement after pressing	Tolerance
13SU	15,88	23,00	21,00	± 0,3
20SU	22,22	30,10	28,50	± 0,3
25SU	28,58	37,20	34,50	± 0,3
30SU	34,00	45,00	42,10	± 0,3
40SU	42,70	55,70	52,30	± 0,3
50SU	48,60	62,00	58,10	± 0,3
60SU	60,50	76,40	71,20	± 0,3
80SU	89,10	111,00	103,50	± 0,3
100SUR	114,30	137,00	127,80	± 0,3

STAINLESS PIPE JOINT TOOL

- Stainless steel pipes for ordinary piping(KS D 3595) Dimension Table

Standards (SU)	External Diameter	Tolerance for An External Diameter		Thickness	Tolerance	Unit of Weight (kg/m)	
		External Diameter	Circumference			STS304TPD	STS316TPD
8	9,25	+ 0 - 0,37	-	0,7	± 0,12	0,154	0,155
10	12,70			0,8		0,237	0,239
13	15,88			0,8		0,301	0,303
20	22,22			1,0		0,529	0,532
25	28,58			1,0		0,687	0,691
30	34,00	± 0,34	± 0,20	1,2	± 0,12	0,980	0,986
40	42,70	± 0,43		1,2		1,24	1,25
50	48,60	± 0,49	± 0,25	1,2	± 0,12	1,42	1,43
60	60,50	± 0,60		1,5		2,20	2,21
75	76,30	± 1%	± 0,8%	1,5	± 0,15	2,79	2,81
80	89,10			2,0	± 0,30	4,34	4,37
100	114,30			2,0		5,59	5,63
125	139,80			2,0		6,87	6,91
150	165,20			3,0	± 0,40	12,1	12,2
200	216,30	3,0	15,9	16,0			
250	267,40	3,0	19,8	19,9			
300	318,50	3,0	23,6	23,8			

※ This specification water, hot water supply, drainage, hot and cold water piping and other piping shall be used against a stainless steel pipe

※ The above options are subject to change without prior notice

DTFM (DAEJIN TECPOS FITTING FORM MACHINE)

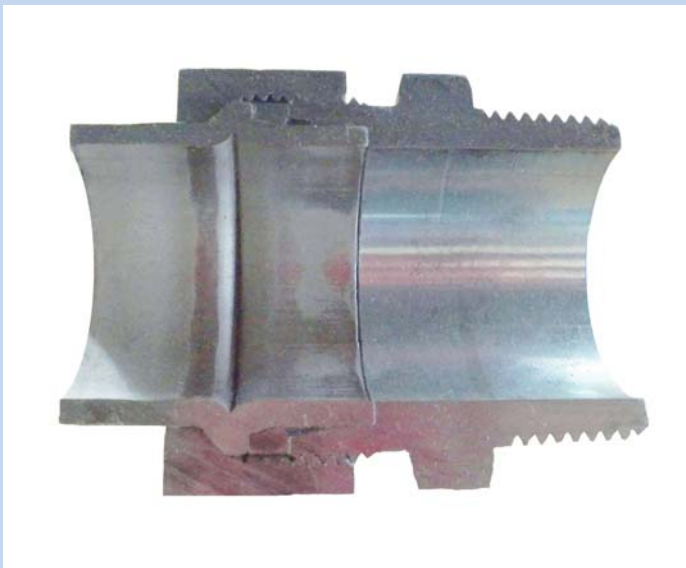


▲ Fitting Form Machine Front

종 류	규 격
Size	700 X 800 X 1500
Forming Force	150 ton
Clamping Force	200 ton
Pipe Size	Ø6 ~ Ø42
Weight	400 kg



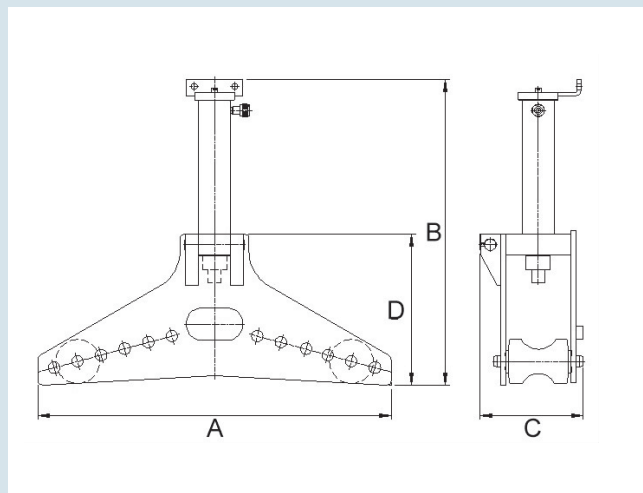
▲ Fitting Form Machine Jig Installation



▲ Union Pipe Assembly Section

※ The above options are subject to change without prior notice

HYDRAULIC PIPE BENDERS



- ① Cylinder : 2", 3", 4"
- ② Maximum Pressure : 700 Bar
- ③ Stroke : 255 ~ 300mm
- ④ Capacity : 10 ~ 20tons
- ⑤ Hydraulic Coupler : TBC 381F(PT3/8)

■ How to understand Model No.

TPB-2"

- Bending Capacity, 2 inch
- Pipe Bender
- TECPOS

Shoe Size		Gas Pipe				Weight (Kgs)
(A)	(B)	Out-Dia Ø	In-Dia Ø	Thickness (mm)	Radius (mm)	
16	1/2	21.7	16.1	2.8	60	0.8
22	3/4	27.2	21.6	2.8	80	1.2
28	1	34.0	27.6	3.2	100	2
36	1 1/4	42.7	35.7	3.5	130	2.8
42	1 1/2	48.6	41.6	3.5	160	3.9
54	2	60.5	52.9	3.8	220	6
70	2 1/2	76.3	67.9	4.2	320	8.5
82	3	89.1	80.7	4.2	425	10.3
104	4	114.3	105.3	4.5	600	15.6



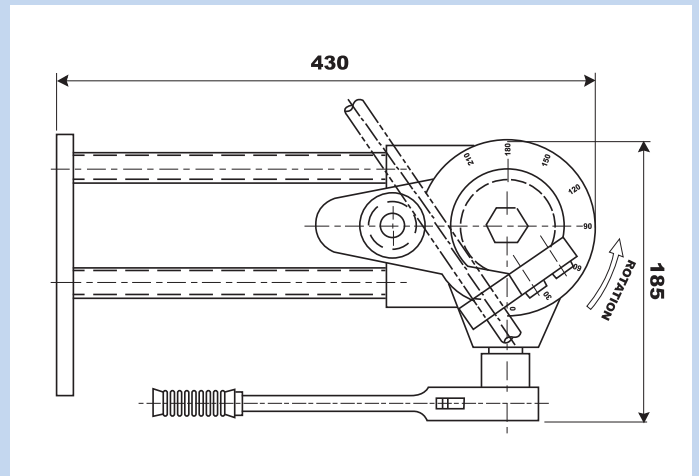
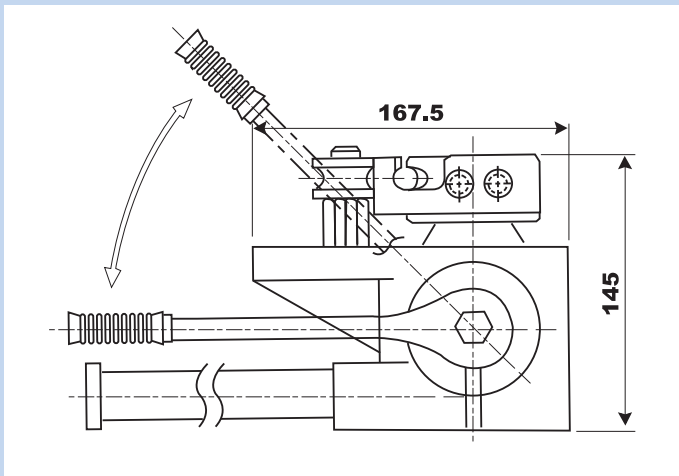
■ Specifications

Model	Model Capacity (inch)	Max. Wall Thickness (mm)	Max. Bending Angle (°)	Dimension (mm)				Bending Shoes (Qt' y)	Cylinder Capacity (tons)	Stroke (mm)	Oil Capacity (cc)	Weight (kgs)	Pump
				A	B	C	D						
TPB-2	2" (50A)	3.8	90	700	555	250	170	1/2"-2"	10	255	388	40	1B
TPB-3	3" (80A)	4.5	90	870	751	300	250	1/2"-3"	15	285	677	114	1C
TPB-4	4" (100A)	4.9	90	1000	766	300	260	1/2"-4"	20	300	996	130	

RATCHET HAND BENDER



- Formers size : $\varnothing 10$, $\varnothing 12$, $\varnothing 15$
- This bender is light weight portable.
- It takes little time to exchange formers.
- Bending is easy with bevel ratcheting.
- This bender can be used for any tube material (steel, stainless steel, copper tube, etc.) and there will be no deformation.

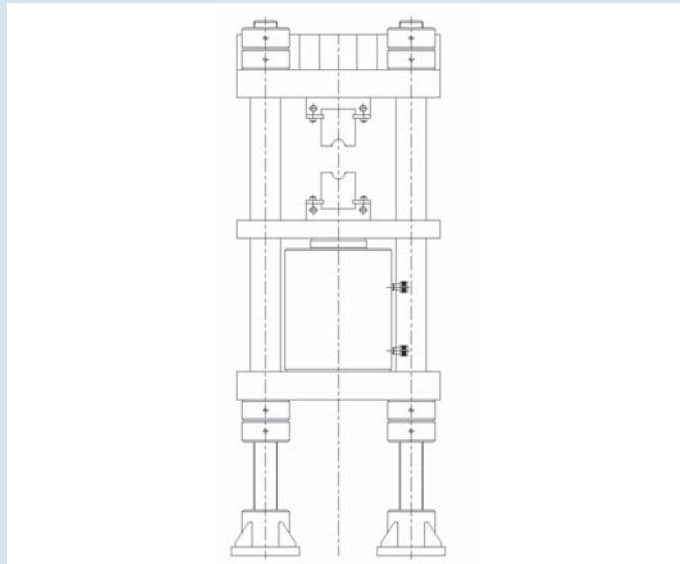


■ Specifications

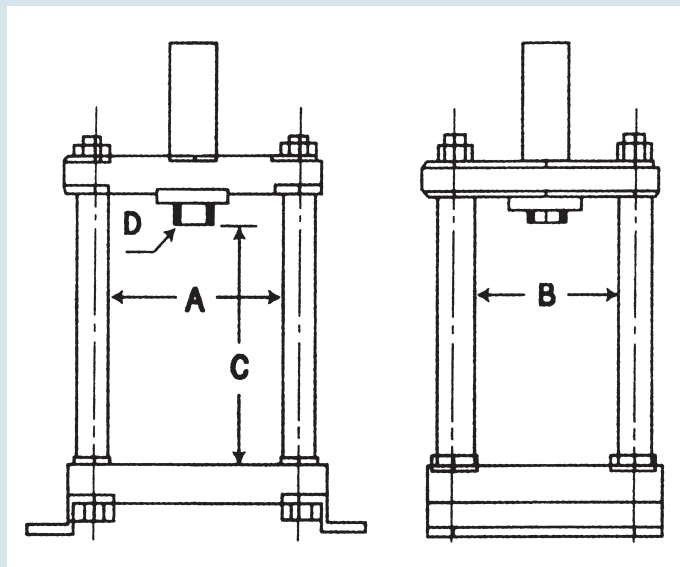
Model	Max. Bending Angel (°)	Max. Bending Size			Weight (Kgs)
TPBR-2	180	Stainless	Steel	Copper	4.2
		$\varnothing 15 \times 2$	$\varnothing 15 \times 2$	$\varnothing 15 \times 3$	

HYDRAULIC SHOP PRESS

- Wire Rope Swage Press



- Shop Press (TSP)

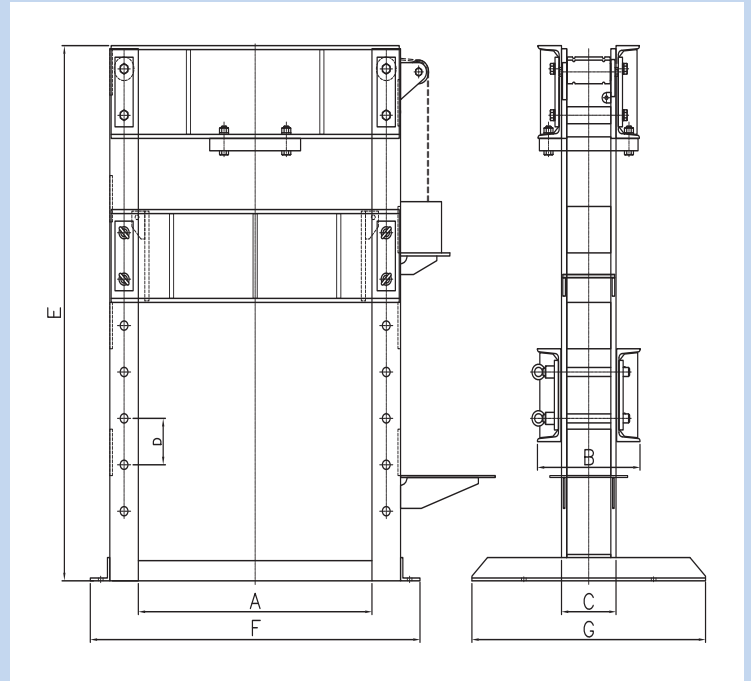


■ Specifications

Model	Capacity (Tons)	Stroke (mm)	Dimension				Weight (kgs)	Cylinder	Pump
			A	B	C	D			
TSP-10	10	150	300	250	300	M36XP2,0	140	TSC10150	Hand Pump or Electric Pump
TSP-20	20	150	350	250	390	M56XP2,0	240	TSC20150	
TSP-30	30	150	400	300	400	M62XP2,0	360	TSC30150	

HYDRAULIC SHOP PRESS

- Shop Press



- Capacity : 20 ~ 200 tons
- Stroke : 200 mm
- Maximum Pressure : 700 Bar
- Hydraulic Coupler : TBC 381F(PT3/8)
- When pulling and pushing of bearings, gears, couplings, and assembling of products

■ Specifications

Model	Cylinder (tons)	Stroke (mm)	Dimension							Weight (kgs)	Pump
			A	B	C	D	E	F	G		
TSPM-20	20	200	550	330	170	150	1600	860	700	180	Hand Pump or Electric Pump
TSPM-30	30	200	640	330	170	150	1730	970	770	320	
TSPM-50	50	200	900	390	210	150	1730	1270	900	530	
TSPM-100	100	200	1000	460	260	200	1930	1440	900	940	
TSPM-150	150	200	1200	550	350	200	2220	1760	1300	1450	
TSPM-200	200	200	1200	550	350	200	2220	1760	1300	1450	

HYDRAULIC ROCK SPLITTERS

· Electric Hydraulic Pumps

TMP3-M2000R



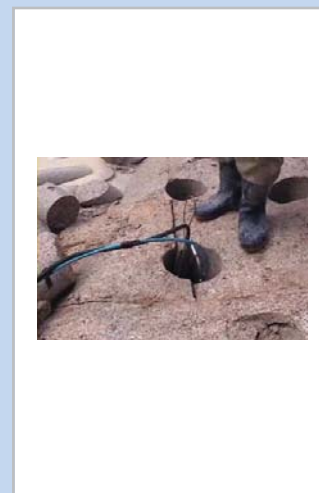
Model	Type	Max. Pressure (Bar)	Voltage	Required Oil (liter)	Reservoir Capacity (liter)	Weight (kg)
TMP3-M2000R	MANUAL	2000	220V & 380V 3-PHASE	36	52	103

· Hydraulic Rock Splitter Cylinder

TRB-21



TRB-1



Model	Cylinder Capacity (tons)	Cylinder Stroke (mm)	Piston Q' TY	Max. Pressure (Bar)	Weight (kgs)
TRB-1	156	52	1 EA	1500	35
TRB-21	190	52	2 EA	1500	38

T E C P O S

EXAMPLES OF APPLICATIONS



※ The above options are subject to change without prior notice

EXAMPLES OF APPLICATIONS



■ C-SECTION STEEL PUNCHING



■ BLOCK LIFT(Heracles)



■ HYDRAULIC AUTOMATIC PULLERS



■ TABLE LIFT



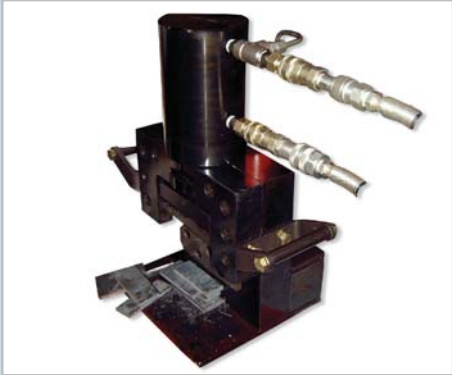
■ SHOP PRESS



■ 10TON C-TYPE PRESS



■ ALUMINUM LOCK NUT CYLINDER



■ PLATE CUTTERS



■ BATTERY BROCK LIFT



■ BATTERY BROCK LIFT

EXAMPLES OF APPLICATIONS



■ **Steel Supports removing Hydraulic JIG** : used in removing steel supports for shipblocks.



■ **Block Lift** : Usually used to set heavy duty shipblocks when shipbuilding.



■ **500Ton Press** : Press may be used horizontally for special applications with user-supplied supports.



■ **30Ton powder forming press** : Using Single-Acting 30ton Cylinder



■ **1.5Ton Reel Stand** : Ratchet type



■ **2Ton Reel Stand** : Hydraulic type



■ **Air Drivein Pump & Water test Pump** : Used in pressure test (Pipe, Tank, Hose, Valve) and bolt tensioning power unit, etc.

※ The above options are subject to change without prior notice

HYDRAULIC ACCESSORIES

Item	Model		Application
	TCV 2000		Hand pumps and Electric pumps for use of both single and double acting Manual Valve
	TSV 3200 Single-Acting	TSV 4300 Double-Acting	Ideal for independent remote control of multiple cylinders or functions. Solenoid Valve
	TMV 2575		Adjust cylinder acting speed by adjusting oil capacity. Stop Valve
	TMV 2577		Adjust cylinder acting speed by adjusting oil capacity. Needle Valve
	TMF 2522		For use of two cylinders with one pump 2-Port Manifold
	TMF 2544		For use of several cylinders with one pump 4-Port Manifold
	TMFO 2529		For use of two several cylinders with one pump 6-Port Manifold
	TMFY 2529		For use of two cylinders with one pump 3-Port Manifold

※ The above options are subject to change without prior notice

HYDRAULIC ACCESSORIES

Item	Model	Application
	TPG 64	Gauge Face Dia. 64mm X 1000 Bar
	TPG 100	Gauge Face Dia. 100mm X 1000 Bar
	TPG 100-25	Gauge Face Dia. 100mm X 2500 Bar
 Block Adaptors	TGA 7001	Gauge Block. For easy mounting of a pressure gauge onto your system
	TGA 7002	Gauge Adaptors. For easy mounting of a pressure gauge onto your system
	THS 700	Max. Pressure 700 Bar
	THS 1000	Max. Pressure 1000 Bar
	THS 1800	Max. Pressure 1800 Bar
	THS 2500	Max. Pressure 2500 Bar
	TBC 381M	3/8" PT. Pin type hose coupler
	TBC 381F	3/8" PT. Pin type cylinder coupler
	TBC 382M	3/8" PT. Ball type hose coupler
	TBC 382F	3/8" PT. Ball type cylinder coupler
	TBC 384WM	3/8" PT. One Touch type coupler
	TBC 384WF	3/8" PT. One Touch type coupler
	TPSC 7000	<ul style="list-style-type: none"> · Pressure Switches, easy to use with high Accuracy · Pressure 700 Bar

※ The above options are subject to change without prior notice